

Jesus loves you. Walk with Him.

BETHELITE

MAY 1, 2024: VOL 73, NO. 5

THIS ISSUE:

WEDNESDAY VESPERS
SERVICE - MAY 1

Page 3

CARING FOR CREATION
CHURCH IN THE WILD
MAY 4TH

Page 4

MOM'S GROUP
MAY 5TH

Pages 5

GETTING THE LOVE YOU
WANT WORKSHOP
JULY 20TH - 21ST

Page 6

MMOCA SPRING GALLERY
NIGHT - MAY 3RD

Page 7

SAVE THE DATES AND
MARCH FINANCIAL
SNAPSHOT

Page 8

A NEW JOURNEY

Over the course of six years, T. S. Eliot wrote a series of poems entitled "Four Quartets." These are four interlinked mediations with the common theme centered on our relationship with time, the universe, and the divine. In the final poem, entitled "Little Gidding" Eliot writes eloquently,

"What we call the beginning is often the end.
And to make an end is to make a beginning.
The end is where we start from."

In these past few weeks, as I began my ministry with you as your Transition Lead Pastor, our weekend worship has centered on endings and beginnings. For the first disciples, what they perceived as an ending, was actually a new beginning as the resurrected Lord stood before them. These first eyewitness accounts of the resurrection often startle me with their stark portrayal of the first disciples as they turn from the empty tomb and begin their walk into the world. For the disciples, there is doubt, fear, unbelief, and a hint of startled joy.

What they had first perceived as the end, with Christ's death on the cross, has instead turned into a new beginning; and in their joy and disbelief they set out into the world on an uncharted journey of faith.

As I begin this new journey of faith with you as your Transition Lead Pastor, I am filled with a mixture of emotions - excitement, anticipation, and - yes - joy! Above all, I am overwhelmed by



Each new voyage is exciting
and allows us to learn to work
together



Pastor Lauren Wrightsman
Transition Lead Pastor
lauren@bethel-madison.org

a profound sense of gratitude for the opportunity to walk alongside you in our shared calling to be witnesses of Christ’s love in the world.

As we do so, I am acutely aware of God’s presence guiding and directing our path, leading us with grace and compassion. This will be a journey of getting to know one another, building relationships, and discerning God’s call for this community of faith. While the road ahead may be unfamiliar, I am filled with hope and confidence, knowing that we do not walk alone.

In Isaiah 43:19, God declares to God’s people, “See, I am doing a new thing! Now it springs up, do you not perceive it?”

The community of faith known as Bethel Lutheran Church has trusted in God’s presence throughout its history, and I am thankful for this community of believers who have walked this journey of faith with



Let us not be fearful of our journey.

countless others; a journey of faith and trust in God who is doing new things:

New things in the mission and ministry of this congregation.

New things in the life of all people.

New things in the community and the world.

As we journey together, may we be united by our shared commitment to trust in a God promise to us. “See, I am doing a new thing!” Let us embrace this time with open hearts and open minds, ready to listen, learn, and grow together in faith.

I am excited to be with you!

Blessings,

Lauren Wrightsman
Transition Lead Pastor 🌈



“See, I am doing a new thing!
Now it springs up, do you not perceive it?”
- Isaiah 43:19

ARE YOU GETTING

OUR WEEKLY EMAILS?

Catch all the updates at Bethel through our Bethel Weekly email, sent out on each Wednesday. You can sign up for these emails on our website at bethel-madison.org or add your email on your Realm profile and choose to receive

emails from Bethel. Also, please be aware that if you do not check the Bethel Weekly emails for a while, your email provider may unsubscribe you from our lists as it will think that you are not interested in our content. 🌈

HR TEAM NEEDS YOU!

Join the Bethel Human Resources Team and become an integral part of our mission-



CONFIRMATION WEEKEND

MAY 6 - 7

As the winter weather breaks and gives us hope that spring and summer are coming soon, Bethel's confirmation program will very soon culminate with a weekend full of celebration and promise for 11 of our young believers. Mark your calendars for the first weekend in May and please pray earnestly for Zoe Engelke, Mercy Knoflicek, Maddie Kublank, Hannah Lenz, Kent Mullen, Nolan Trine, Ella Turcott, and Brady Zoellick, as they prepare their personal faith statements and final confirmation projects.

The celebration weekend begins with our "Faith Statement Banquet" in Borgwardt Hall on Saturday, May 6, 10AM-12PM. Families and friends are invited to join us for a Brunch Banquet where confirmands will be invited to share their faith statements, be prayed over, and awarded their red sashes and Mission Patches. Please email Karin@bethel-madison.org with the number of people in your party so that we can plan for food!

The celebration weekend continues on Sunday morning, May 7, 2023 at 8:30AM when the confirmands will assemble, robe, and be instructed on the final details of their participation in our Affirmation of Baptism ceremony which will be an important element in the 9AM traditional worship service that day. They will process down the aisle to be recognized and prayed for by the whole assembled congregation including their family and closest friends. After the service, the congregation is invited to warmly congratulate them and acknowledge this memorable event with hugs, cards of encouragement and support, words of faith and wisdom, Godly love, and delicious cake! All are invited to share in the celebration by partaking in cake after the service and taking pictures of our beloved newly confirmed youth. 🌈

WEDNESDAY VESPERS SERVICE

Wednesday, May 1
from 6pm - 6:30pm

Please join us at Bethel for a monthly youth-led Wednesday Night Vespers Service. Members from the Youth Group will help plan and lead the service. It will be a thoughtful, meaningful, and contemplative service. From Heather Rainwater Moen, "My prayer is that this monthly offering will nourish, reassure, and renew our congregation." Families need to register their (child)ren for child care for any event prior to dropping their child off for care. If you registered for Sunday morning, you do not need to register again. 🌈

XYZ

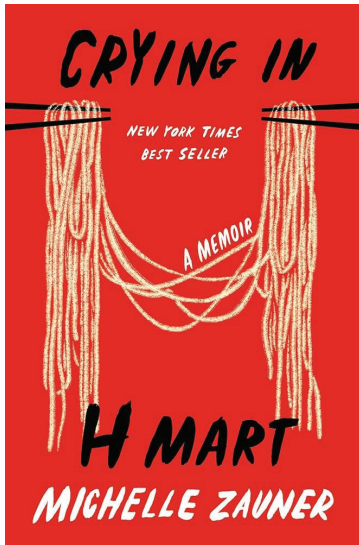
May 10th meeting at 9am in Borgwardt Hall.

May 24th NO meeting----holiday weekend.

We are taking reservations for the Lake Geneva mailboat Cruise and lunch on July 26th. Contact Sue Marking at wmarking@msn.com or 608-318-0090 to sign up or questions. 🌈

FRIENDSHIP CLUB

The next meeting for Friendship Club will be our end-of-year picnic on Friday, June 14 at Lakeview Park, on Mendota St, off Allen Blvd. Appetizers are at 5:30, we'll eat at 6:15 and New Horizons Swing Band will entertain us at 7:00. Though retired, Steve Nelson will cater our meal. Cost: \$14. Please contact Judi Griffin to make your reservation, 608 222-9290 no later than Tuesday, June 11. No parking on the grass! 🌈



BETHEL BOOK WOMEN AND “CRYING IN H MART”

The Bethel Book Women will be reading their next book, “*Crying in H Mart*” by Michelle Zauner, starting Monday, May 20th at 7pm in Room 120. Please join us for this fantastic read and bond over books with other Bethel Women.

“*Crying in H Mart*” by Michelle Zauner is a poignant memoir about growing up Korean-American, losing her mother to cancer, and finding solace in food. It is a heartfelt exploration of grief, identity, and the power of cultural connection. 🌈

BETHEL IS HIRING A MINISTRY SUPPORT SPECIALIST

Bethel is seeking a full-time Ministry Support Specialist to join our team. Please see the job posting for further details and feel free to share with others. Contact employment@bethel-madison.org for more information and to apply. 🌈



MOTHER

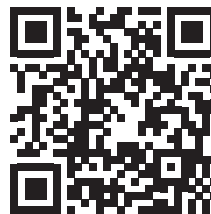
Don't miss these upcoming events to celebrate mothers and the biggest mother of all: Mother Earth!

CARING FOR CREATION: CHURCH IN THE WILD AT BETHEL HORIZONS

Saturday, May 4th

A synod-wide event led by Bethel, Church in the Wild is not just an outdoor church service, but an invitation to worship in the cathedral of earth and sky. After a brief opening liturgy, we'll wander into nature individually or in small groups to see, listen, contemplate, and sense our connectedness to all living things. Then we'll regather to share how we've experienced the sacred in the creation, to “give thanks for the peace of wild things,” and to join in Holy Communion with Bishop Joy Mortensen-Wiebe. We'll conclude with fellowship at a free earth-friendly lunch prepared by Horizons Chef Cena and served by Bethel youth.

Church in the Wild is generously supported by the Bethel Endowment foundation. 🌈



BETHEL @ HORIZONS SPRING AND SUMMER EVENTS

Summer @ Horizons
July 2-5

Enjoy even more days of @Horizons fun. Connect with your faith, deepen your relationships and revel

in God's glorious creation. Families, friends, artists and hikers come together to enjoy the best of summer at beautiful Bethel Horizons.



Vacation Bible Camp July 29 - August 1

VBC@Horizons is a cherished Bethel tradition. Kids aged 5-18 are welcome for a week of camp, faith formation, and fun. Your children or grandchildren will be transformed by a week spent living in Christian community at Bethel Horizons.

To Register:

Use the QR code to go to the Bethel Horizons website and then click on the words “Register Here” and login or create

a new account. You just need the special code [Bethel24](#) when it asks for the “GHR ID.” This code will allow you to see VBC as an option to select for registration.



S AND CREATION



MOM'S GROUP

May 5th at 10am

Calling all Moms! Come join our Mom's group where we support and lift each other up through the joys and struggles of motherhood!

While our meetings will focus on the needs of moms with young children, moms with children of all ages are always welcome.

Our meetings will be on the first Sunday of every month, and will focus on a variety of different topics and activities that are



part of daily life as a Mom. If you have any questions or are interested in learning more, please feel free to email

deannal Larson@protonmail.com.

Our next meeting will be on Sunday, May 5th at 10 am in Room 203. We look forward to meeting you! 🌈

BETHEL IS HIRING A WEDDING COORDINATOR

Bethel Lutheran Church is seeking a church member to serve in the capacity of Wedding Coordinator. The individual will be an independent contractor and work as needed based on a wedding being scheduled at the church. This individual will not be considered an employee of Bethel. For a wedding that is being officiated by a pastor of Bethel, the Wedding Coordinator spends approximately 8 hours working with the couple, staff, and pastoral staff for planning and coordination purposes. For a wedding that is not officiated by a pastor of Bethel, the time spent coordinating is less than 8 hours depending on the need. Contact employment@bethel-madison.org for more information and to apply. 🌈



GETTING THE LOVE YOU WANT WORKSHOP

For whom? All Bethel couples in a committed relationship

When? Saturday, July 20, 9am to 7pm, and Sunday, July 21, 9am to 6pm

Where? Bethel Lutheran Church

How much? \$300 a couple (Bethel members) \$350 a couple (Non-Bethel members)

Why should I attend? This fun, lively, experiential workshop will help you turn conflict into opportunities for healing and growth. You will explore anew your formative history to understand its impact on your daily lives and gain compassion for your partner's story. You will leave the weekend with fresh insights, new skills, energy and hope to restore the commitment and romance in your relationship.

Who are the leaders? Caroline and Jason Bernhardt-Lanier, experienced workshop presenters. Caroline has a PhD in counseling and is a certified Imago therapist and clinical instructor with the Imago International Training Institute. Jason is an executive director for the global Spiritual Changemaker Initiative with a background in strength-based coaching and organizational leadership. Jason and Caroline are celebrating 30+ years together.

For more details, please contact Caroline (cbl@imagocenterdc.com), and Kathy with questions. (kathyforde1212@yahoo.com). 🌈



LEARNING IN THE COMMUNITY

by Angie Buelow

Don Hunt taught the first ceramics class at Bethel Horizons in 1982 in the dining room of the Barn Retreat Center," shared his widow, Kathy Hunt. "Don's dream was to create a studio where anyone could come and learn to throw a pot."

"After that first year, they moved Don's ceramic class from the Barn to the picnic pavilion in the campground at Horizons. Don increased the number of workshops he taught for the next few summers. He partnered with UW Platteville to offer credits to teachers and college students. Don discovered that a lot of time in the smaller school districts, teachers had very little, if any, experience with clay. He wanted to provide a place for teachers to learn ceramics and get continued education credit. He had no idea how it would turn out, but these workshops became extremely popular. Teachers who attended loved being able to spend one week out of the summer learning, working, and being creative at Horizons."

This grew into "Communing with Clay," where teachers that Don knew in the Madison area would bring out their high school students. Don championed multi-generations working and learning together. He believed that everyone had different techniques to share and that learning from many different teachers had real value for the students and adults in attendance."

We are so excited to be welcoming back some of Don's early teachers from Communing with Clay. Geof Herman, Phyl Lyons, and Kathy King will be sharing their history and the benefits of workshops that Adamah provides teachers during "A Night At Adamah Art Studios: Educators Making Connections" on April 11 – 12, 2024.

To look back at those early days and see Don's vision grow from just a few workshops in the summer to almost 40 creative workshops annually is just incredible. His passion and belief in coming together and learning in community touches everyone who attends a workshop at Adamah. 🌈



MMOCA'S SPRING GALLERY NIGHT AT BETHEL

May 3, from 5 - 8pm
with Artist Talk in Good Shepherd Chapel at 6pm

Bethel's Fine Art Committee welcomes you to view and experience the wonderful Abstract Expressionistic acrylic paintings of local artist Matthew Braunginn.

Per Matthew's art statement:

"These pieces are created through an emotionally driven, intuitive process. This process is guided by my absorption of life, society, sound, light, and physical space— it is how I experience life and existence and, in turn, is an expression of existence itself. These are made in a soundscape of a wide variety of musical genres, where, at times, I enter an almost psychedelic state, as if my neurons are forging new connections in each creation, with those connections being expressed within the creation itself."

As an artist, I got by Higgs: Higgs from Higginbotham, my paternal lineage, a rich history of Civil Rights, liberation, and the struggle of the African Diaspora. Finding meaning, soul, and a people in the attempt to capture and erase those very things.

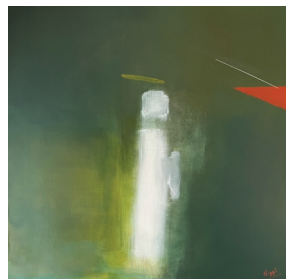
Higgs is the Higgs Boson, the particle that gives things mass. Without it, all this space and existence would have no mass.

The experience of these works reflects an existence of itself and the paradox of the uniqueness of our own individual existences— what you are seeing and experiencing is only experienced inside you. So this expression of my existence quickly expands, living in an almost liminal state, challenging boundaries and perceptions as you form new neural connections in viewing the art." 🌈

NEW BLUE SUN: AN ANDRE 3K PRODUCED SERIES

May 1 - June 30, Gallery Hallway

Image: God's Piper, Matthew Braunginn



OVERTURE STAFF DONATES TO FOOD PANTRY

It's often said that it takes a village to raise a child. I think it can also be said that it takes a community to deal with issues such as food insecurity. We are blessed at Bethel to have supportive congregation members and non-members who donate their time, money, and/or food and personal essential items to keep Bethel's Food Pantry running successfully. We are also fortunate to have good community neighbors who pitch in to assist our efforts. The staff at Overture Center held a cereal drive for our pantry during the month of March. They are part of our community and strive to be good neighbors, and we appreciate their efforts. They delivered nearly 200 boxes of cereal to the Food Pantry at the beginning of April!! A sincere thank you to the Overture Center staff and to everyone who donates to the Food Pantry! Please remember that "Wish Lists" for needed items in the pantry are available on the slat board outside the sanctuary. Contact Cheryl Frazier, Pantry Manager, if you have any questions.

Fun Fact: Fifty-five percent (55%) of our pantry guests are from our neighborhood, the three zip codes surrounding Bethel. The remainder of our guests reside throughout Dane County. 🌈

ADDRESS SERVICE REQUESTED
DATED MATERIAL: REQUESTED IN HOME BY MAY 1 2024

NONPROFIT ORG
U.S. POSTAGE

PAID

MADISON, WI
PERMIT 602



BETHEL

LUTHERAN CHURCH

312 Wisconsin Avenue
Madison, WI 53703



LOOKING AHEAD

July 2 - 5

Summer at Horizons

July 20 - 21

Getting the Love You Want Workshop

July 29 - August 1

Vacation Bible Camp 

FUND FACTS

1 Expense to fund one day of the year for BLC \$5436 – based on the 2024 operating budget.

2 Gifts given to support Bethel's operating budget last year came from 654 households, and 79% of total gifts were from Pledged plans.



MARCH 2024 YEAR-TO-DATE FINANCIAL SNAPSHOT

	YTD Actual	YTD Budget	Variance
REVENUES			
Offerings	373,874	395,125	(21,251)
Miscellaneous revenue	51,417	99,088	(47,671)
Non-operating revenue	5,838	2,000	3,838
Total Revenue	431,129	496,213	(65,084)
MINISTRY INVESTMENTS			
Staff	259,303	352,313	(93,010)
Ministry & Resource Teams	103,454	104,371	(917)
Benevolence	7,250	6,833	417
Administration	29,600	24,763	4,837
Other	-	-	-
Total Ministry Investments	399,607	488,280	(88,673)
Total Net Income (Loss)	31,522	7,933	23,589

A complete copy of the financial statements are posted to Realm;
you can access these through your Bethel Realm profile.



Worship Times: Sunday at 7:30am & 9am - Traditional; 11am - Contemporary
Saturday at 5pm - Acoustic Casual

