



BETHELITE

JULY 1, 2023: VOL 72, NO.7

THIS ISSUE:

WOMEN OF ELCA
GATHERING
SEPTEMBER 21-24

Page 3

SUMMER DROP-IN CHOIR

Page 4

ENDOWMENT
FOUNDATION

Page 5

LUTHERAN WORLD RELIEF
WORLD ART SHOW

JULY 9

Page 6

MALLARDS GAME
AUGUST 10

Page 7

12TH ANNUAL BLOOD
DRIVE IN HONOR
OF CHAS BERTUN

JULY 26

Page 8

LIVING AS A CHRISTIAN IN THE LAND

What could incite otherwise law-abiding 1940's white Christian Americans to treat a group of fellow white Christian citizens so awfully? In Nebraska, one member of this group was castrated. In Wyoming, another member was tarred and feathered. In other states, members were beaten, their meeting places ransacked, and their children expelled from schools by the thousands. They were commonly arrested and then imprisoned without being charged. Certainly, the castrated, tarred, beaten, attacked, and imprisoned people must have posed a great threat to the country to prompt such violent treatment. They must have been insurrectionists or revolutionaries whose alternative facts and views led them to plot the overthrow of the government through violence. What else could explain it? They must have been communists, Nazis, or anarchists, right? Wrong. They were Jehovah's Witnesses.

One would expect that the law of the land, as interpreted by the Supreme Court, would have protected them. After all, we are talking about the middle of the twentieth century, more than one hundred fifty years after the U.S. Constitution had assured religious freedom and equal protection under the law. Yet, in 1940 the Supreme Court did just the opposite. It ruled against a religious practice of an essentially peaceful people. What had the Jehovah's Witnesses done? What crime against the nation were they guilty of? Their "crime" was circulating pamphlets such as "Reasons a True Follower of Jesus Christ Cannot Salute a Flag." According to their strict interpretation of Exodus 20:3-5, saluting the U.S. flag or saying the Pledge of Allegiance was a



"Love your neighbor"
--Luke 10:27



Pastor Mike

pastormikebrown@bethel-madison.org
419.345.2836

form of idolatry, a violation of their religious convictions.

As the case wound its way through the legal system to the Supreme Court, war was spreading in Europe with the Nazi's blitzkrieg bringing country after country to its knees. A month before the Supreme Court decision against the Jehovah's Witnesses, France had shockingly and easily fallen to Adolf Hitler as columns of Nazi's marched through Paris. A photo of Hitler from June 30, 1940 shows him in Paris surveying his conquest and claiming all the city's cultural treasures as his own personal possessions. Posing in front of the Eiffel Tower, the beloved symbol of France and the country's free, democratic people, he also claims their freedom.

In the US, there was a growing awareness that Americans had to stand together. The pamphlets, their teachings, and therefore the Jehovah's Witnesses, were seen as unpatriotic. In an 8-1 decision, the Supreme Court ruled that



Pray for Madison

schoolchildren should be forced to salute the flag and say the Pledge of Allegiance whether they wanted to or not. Jehovah's Witnesses continued to refuse. To them, the flag was an icon, an idol, a symbol of an authority other than God. In 1935, official Jehovah's Witness literature argued that saluting the flag was a U.S. import of the Nazi "Heil Hitler!" salute. Their continued refusal brought even more widespread and violent reactions from fellow Americans. But in 1943, the Supreme Court reconsidered the case and reversed its decision.

Standing together, allegiance to the people, and loyalty to one's country has been a fundamental requirement in the creation of stable, vibrant, and just human communities of any size since the dawn of time. We are called by God to invest ourselves in the care and welfare of the societies in which we live. Around 597 BC, the Babylonians conquered and dragged-

off into Exile the Southern Kingdom of Judah and looted its capitol Jerusalem. Everything they had believed and assumed in life had been turned upside down. That left them with the question: "What now?" They had no city, no country. This is where the prophet Jeremiah has a word from the Lord. He says "work for the peace

and prosperity of the city where I sent you into exile. Pray to the LORD for it, for its welfare will determine your welfare" (Jeremiah 29:7). The point is that whether you feel like you belong there, agree with what is going on around you, believe in and support the leaders...apply yourself to the betterment of the city and the nation. Even pray for God to bless it.

This is precisely what early Christians did in the decades and centuries following Jesus' resurrection. Even though they were often times hated, abused, fed to lions, set on fire, faced gladiators, and imprisoned, they invested themselves in the service of the society. They

"Pray for the city"

--Jeremiah 29:7

not only cared for each other; they cared for their neighbors and cities. When the massive pandemics swept across the Roman Empire and pagans were fleeing the cities in self-preservation, Jesus' followers stayed behind to care for the sick, the dying, and others in need. At the heart of following Jesus is the awareness that,

in the end, we do not completely belong in any country. We are "aliens" says Ephesians 2:19, and "citizens of heaven" (Philippians 1:27). That means that even though no nation or leader is to receive our absolute allegiance we are also called to contribute to the common good. 🌍



LUTHERAN WORLD RELIEF KITS

SPut your faith into action! Help neighbors in need around the world through the LWR kit drive. Bethel invites individuals, families, and small groups of friends to participate in assembling items to complete or contribute to one of the kits described below. See www.lwr.org for descriptions of kit contents.

For those who don't like to shop, a financial contribution toward shipping costs or toward items the leadership team will purchase to complete partial kits is always welcome. We will be accepting kits and/or contributions on Sundays in August or anytime at the front desk. Personal Care Kits provide the basic items needed for hygiene for someone who has been displaced from their home due to a natural disaster or political crisis. These items help to support health and prevent disease.

School Kits contain essential supplies to help children continue learning despite the hardships they face. In the places where LWR works, attending public school is usually free, but even a few required supplies, like pens and paper may be more than families can afford. Girls are especially at risk since often their education is deprioritized.

Fabric Kits are used in vocational training programs to teach sewing skills. They also provide a way for newly trained tailors to launch their sewing businesses to help support themselves and their families. The training programs use sewing machines, so fabric and thread are crucial.

Most recipients use their Mission Quilts to shield them against the cold and rain, and for warm bedding. But their versatility also makes them useful as a simple tent, a room divider, a floor covering or a wrap to hold a baby on a mother's back. A quilt has even been repurposed and made into a bridal dress.

Bringing a baby into the world can be a difficult and scary thing for a mother living in poverty. Keeping a new baby healthy, clean, and comfortable can take a lot of resources. The items included in a Baby Care Kit provide the basics a family needs to care for their newborn the way they hope to. Parents of new babies always worry, but having some essentials allow them to enjoy and get to know their little ones and introduce them with pride and dignity to the world. Baby Care Kits are the most complicated of LWR kits. Each kit includes 2 T-shirts, 2 gowns or sleepers, 2 receiving blankets, 4 cloth diapers, one jacket or sweater with hood or hat, 2 pair of socks, one hand towel, 2 diaper pins and 2 bars of mild soap. Several Bethel members have generously supported Baby Care Kits by knitting and crocheting sweaters and baby hats, sewing receiving blankets and cutting flannel for diapers.

The Lutheran World Relief website, www.lwr.org, offers much more information about where and how kits are used around the world. And, it's not too late to apply for a Thrivent grant, if you are a Thrivent member, to apply toward purchasing items for LWR kits. 🌈



WOMEN OF ELCA GATHERING

September 21 - 24

Due date for sign up is July 15

After 6 long years, the women of the ELCA will gather in Phoenix to learn, be energized, and grow their relationship with God and each other. If you are interested in attending, please contact Kathy Forde for more information at 414-303-1912 or kathyforde1212@yahoo.com by July 15th. Early Bird pricing was extended and we have scholarships available through a generous Bethel Foundation Grant. Prayerfully consider attending! 🌈

JOB OPPORTUNITIES AT BETHEL

Resident Security Opportunity at Bethel available. Tasks involved average less than 20 hours weekly, in exchange for living rent free in two bedroom apartment with utilities included. Contact employment@bethel-madison.org for more information and to apply. More jobs can be found on the Bethel website on our Employment Opportunities page! 🌈



FUNDING EXCEPTIONAL MUSIC

Through its financial support for the Bethel Concert Series, the Bethel Brass, and Choir Section Leaders, the Bethel Endowment Foundation has helped raise the ministry of Music and Worship to new heights. Since the inception of the Concert Series in 2022, the BEF has made possible concerts featuring national and international music sensations including the Seraph Brass, the Jutt-Weinholtz duo (flute/harp), Inna Faliks (piano virtuoso), Kara Shay Thomson (dramatic soprano), Luther College's Nordic Choir, the Verona Quartet (string quartet), and Jenn Bostik (contemporary Christian singer). 🌈



Kara Shay Thompson



FOR THE BETHEL'S ENDOWMENT FOUNDATION

Spectacular Results from Spectacular Love

Ask anyone who knows the Trustees of the Bethel Endowment Foundation (pictured right) how they have achieved the results they have and they are sure to say it is because of their spectacular love for Bethel and for Jesus. This group of leaders has for years overseen, managed, and invested the assets of the BEF which now total over \$20 million dollars. Their skill, discipline, and foresight have put Bethel in a unique position among churches in America for building Christian community, carrying forward the Lutheran witness to Jesus, and transforming the world. Above and beyond the \$1.8 million Bethel members contribute in Sunday offerings for the life of the church, the BEF generates another approximately \$700,000, 25% of which is directed to Bethel Horizons Church Camp.

This year alone, the BEF has funded following initiatives, improvements, and repairs:

- Bethel Marketing & Advertising \$50,000
- Bethel Outdoor Sign Upgrades \$17,533
- Bethel Speaker Series \$18,000
- Bethel Concert Series \$18,000
- Bethel Brass \$48,000
- Choir Section Leaders \$16,900
- Choir Room Smart Board \$9,000
- Choir Balcony Upgrades \$24,525
- Kids & Family Outreach \$10,000
- Vacation Bible Camp \$29,500
- Kids and Family Ministry Retreats \$7,900
- Youth Mission Trip \$15,000

- Bethel Youth Programming \$18,000
- Stewardship \$13,000
- WELCA 2023 Gathering \$10,000
- Women's Retreat \$4,800
- Advent by Candlelight \$2,000
- Homeless Retreat \$6,500
- Rebuilding Divorce Recovery \$6,000
- Puerto Rico Mission Trip \$5,000
- Homeless Ministry Summit \$2,700
- Bethel Bible Series \$9,900
- Care4Creation Initiatives \$4,800
- ACTJAM Initiatives \$4,000
- Summit to End Homelessness \$2,700
- Fire Alarm System Repair \$50,000
- AC Repair \$20,750
- Air Handler Replacement \$106,750
- Art Gallery Lighting \$8,680

In addition to these Bethel projects, the Endowment Foundation have funded projects at Bethel Horizons, including:

- Bethel Horizons: Replacing the siding, windows and gutters at the Camphouse.
- Campground Improvements.
- Inflatable Obstacle Course.
- Prairie Center, Farmhouse and Camphouse new furniture
- Mountain Bikes. Trek partnered with Bethel Horizons to offer a 20% discount to purchase 20 Marlin 6 bikes and helmets.

Praise the Lord for the BEF Trustees!!! 🌈

MISSION



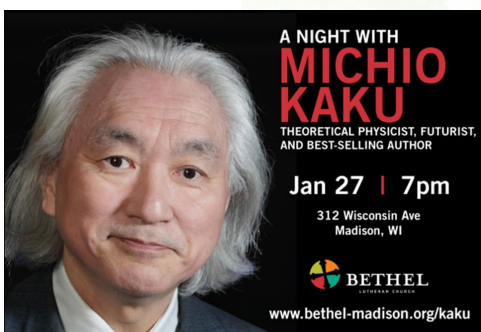
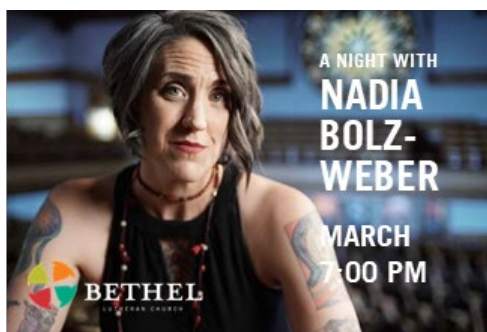
Pictured above left to right: Tony Arneson, Alice Mowbray, Soren Schoff, Abby Wallhaus, Al Schultz, Laura Vogel, Walter Dewey, Jill Derr, Kathy Pielage, Joe Murphy, Dave Coe. Lower left: Barb Armstrong

SUPPORTING THOUGHT LEADERSHIP

The reach of the Bethel Endowment Foundation extends wide and deep in its support of the Bethel Speaker Series which started with a bang in 2020 with Nadia Bolz-Weber whose appearance inspired to buy the 1,000 tickets available on EventBright, with a waiting list of close to 100. The pandemic

depressed attendance at the next event with Shane Feldman, but the next speaker, globally recognized astrophysicist Michio Kaku, brought the series back with attendance of close to 500. This Fall Brian McLaren joins Bethel. His presence is expected to once again pack the house as he helps confront some

of the difficult truths about Christianity and makes a case for how mindful Christians can remain faithful followers of Jesus. He is known for his passion for “a new kind of Christianity”.





GARDENING PROJECT

Good Shepherd Lutheran Gardens

Join folks who like to garden Wednesday, June 28, from 4:00-6:00 p.m. at the Good Shepherd Lutheran food pantry garden project, which supplies free, fresh produce to area food pantries. The Verona campus is located at 7291 County Rd. PD. Please email Kris Fansler (Krisfansler@gmail.com) if you will be participating, so she can let Pastor Dara know how many Bethel folk are coming. We've scheduled two work sessions in July and one more in August. 🌱

RIDE SHARE AT BETHEL

Bethel has received a few inquiries regarding the possibility of getting picked up (and then taken home) for worship on Sunday from members who no longer drive. We have those names collected, but likewise, if you are someone who would be willing to be on a short list of reliable and trustworthy chauffeurs — please be in touch with Kevin Honaker at Bethel, and he will try to be the matchmaker — no promises, either way — whether needing a ride or us identifying those willing. kevin@bethel-madison.org or by phone 608.257.3577 ext 338. Thank you for your consideration of serving in this manner. 🌱



FOOD PANTRY

This is the season...for gardening, that is! Bethel's Food Pantry volunteers would be delighted to accept your donations of extra produce from your gardens to share with our food insecure neighbors. The pantry is open from 1-3:00 pm on Monday, Wednesday, and Friday each week. Thanks for considering! Students from Oregon Middle School visited our pantry last month and brought donations as they participated in an Urban Challenge. This is the second year Bethel's pantry has been part of their planned stops, and we were grateful for their generous donation of food items.

Their organizer always asks for ideas on what we currently need in the pantry. Here is the list: canned vegetables, canned fruit, cereal (cold and hot), soup (especially chicken noodle and chicken with rice), and ramen noodles.

We want to thank the circles who have helped provide toiletries for the pantry this year. Our guests appreciate getting personal essentials in addition to food. Items most often requested are shampoo, toothpaste, deodorant, baby wipes, and dish soap. The Food Pantry has a donation barrel inside the parking lot entrance. Thank you for your support of our outreach mission! 🌱

LUTHERAN WORLD RELIEF MISSION QUILT ART SHOW

July 9th, 10:30am - 12pm

Bethel's Blanket Workshop has been making quilts for Lutheran World Relief since 1969. Volunteers currently meet twice a month and use donated fabric and other materials to assemble Mission Quilts. The Blanket Workshop has assembled over 9,500 quilts to date. Quilt samples of their work are on display in the Gallery Hallway. All quilts from Bethel will be shipped to a warehouse in September where they will be processed and then sent overseas

to the areas where they are most needed. Using tracking data over the past several years we know our quilts have been distributed in Angola, Burkina Faso, Ukraine, Mauritania, Georgia and Serbia. You are invited to attend a reception on July 9th from 10:30am until noon. Bethel's workshop volunteers will be available in the Gallery Hallway to answer questions about the quilt display and Bethel's Blanket Workshop. 🌱



BIKE-A-THON THANK YOU

by Angie Buelow

We are so grateful to everyone who participated and supported the 38th Annual Bethel Horizons Bike-A-Thon. We want you to know what type of experiences your contributions to the Bike-A-Thon provide.

One of the coolest things I, Angie Buelow, have come to realize over these last two years, at Horizons, is that the students who come for a field trip truly experience Horizons mission of connecting to the harmonies of God, self, others and nature, in a single day!

Mornings start on the activity field with ice breakers. The students become comfortable with each other through fun games in an outdoor setting. They learn what is expected of them from someone other than their parents or teachers. There is this self trust and mutual respect developed during this time.

Exploring and learning about our natural world while visiting the nature center, and getting an actual HANDS ON experience with the live animals, gets them curious about creation

and how everything we do in life impacts the plants, the animals and our world.

Climbing, rappelling and participating in challenges on the ropes course allows students, as an individual, to overcome fears, gain confidence, and problem solve while being cheered on and celebrated by their peers for accomplishing a difficult task.

It really is magical to see Horizons mission play out in a single day and something that could not be done without your faithful support of the Bike-A-Thon. We could never share our gratitude enough for all you continue to do to support Horizons but I hope I have provided a little more of an insight on the impact field trips to Horizons provide. Without you, we would not be able to continue offering affordable field trips and providing this transformational experience for students.

You truly make a difference! 🌈



MALLARDS GAME

August 10 at 5:05pm

Sign-up TODAY! The Ticket Deadline is August 3rd. All tickets are mobile, you can order via the QR code below. \$22 for food and beverage (soda), \$29 for food and beverage (beer). Pepsi Pre-game package includes food and beverage for 90 mins (60 mins before first pitch and 30 mins after) If you have a child under 5 that does not require their own seat they are free. Use the QR code to the right to get your tickets!!



MEN'S CURRENT CHRISTIAN CONCERNS TOPICS

Men, if you want to start your Thursdays on a high note, come and attend Men's Current Christian Concerns at 8:30 AM in room 201, Luther's Room, on the second floor of Bethel. Although serious issues are discussed, not much is taken very seriously so you will leave in an uplifted, positive mood. With almost 20 men attending this one-hour discussion, you can easily slip in, get a sample of the raucous atmosphere, and later decide about returning. For more information, contact Larry Larrabee at 249-9982.

- July 6 Aging
- July 13 Electric Vehicle Illusions
- July 20 Reparations Aspirations
- July 27 Doctrine of Discovery 🌈



12TH ANNUAL BLOOD DRIVE IN HONOR OF CHAS BERTUN

July 26, 12pm - 5pm

Celebrate life and make a difference by giving blood. Blood is needed for many different kinds of patients. It could be a young child with a rare blood disorder, a family member fighting cancer, or a friend involved in a car accident. Please schedule an appointment to donate at this special blood drive. You'll feel good knowing you've helped change the lives of patients in need.

Come give July 17 thru 31 for an exclusive Shark Week shirt from Discovery, while supplies last!
Appts: rcblood.org/donate

XYZ EVENTS

Friday, July 14th: meeting at Bethel, 9am, lunch is appetizers and sundae bar

Friday, July 28th: NO meeting at Bethel, boat trip and buffet lunch on the Wolf river.



BETHEL

LUTHERAN CHURCH

312 Wisconsin Avenue
Madison, WI 53703

ADDRESS SERVICE REQUESTED

NONPROFIT ORG
U.S. POSTAGE

PAID

MADISON, WI
PERMIT 602

MAY 2023 YEAR-TO-DATE FINANCIAL SNAPSHOT

	YTD Actual	YTD Budget	Variance
REVENUES			
Offerings	624,820	669,458	(44,638)
Miscellaneous revenue	49,567	97,540	(47,973)
Non-operating revenue	915	(313)	1,228
Total Revenue	675,302	766,686	(91,384)
MINISTRY INVESTMENTS			
Staff	508,132	574,593	(66,461)
Ministry & Resource Teams	156,144	143,527	12,617
Benevolence	13,108	11,666	1,442
Administration	47,031	36,730	10,301
Other	-	-	-
Total Ministry Investments	724,415	766,516	(42,101)
Total Net Income (Loss)	(49,113)	170	(49,283)

A complete copy of the financial statements are posted to Realm;
you can access these through your Bethel Realm profile.



[bethel_madison](https://www.instagram.com/bethel_madison)



[Bethel.Lutheran.Madison.WI](https://www.facebook.com/Bethel.Lutheran.Madison.WI)



[bethelmadison](https://twitter.com/bethelmadison)



[BethelLutheranTV](https://www.youtube.com/BethelLutheranTV)

Worship Times: Sunday at 7:30am & 9am - Traditional; 10:30am - Contemporary
Saturday at 5pm - Acoustic Casual

