



BETHELITE

JUNE 1, 2023: VOL 72, NO.6

THIS ISSUE:

GOD AT THE MOVIES
SERMON SERIES

Page 3

BIKE-A-THON
JUNE 3

Page 4

SUMMER AT BETHEL

Page 5

CONCERT SERIES
IS A HIT

Page 6

FRIENDSHIP CLUB

Page 7

MADISON SYMPHONY
ORCHESTRA

Page 7

XYZ EVENTS

Page 8

DOES E.T. NEED BAPTISM?

When I was a child, I remember sitting under the night sky with my father pointing-out the Big and Little Dippers while we watched for “shooting stars.” The dark expanse above seemed so unfathomably large. It might have seemed impossibly large and strange had it not been for the fact that as we watched for “shooting stars” we also relived the regular trips to our own meteor crater not far from my backyard. We knew that what was “up there” was often quite close. The meteorites we had collected travelled millions of miles through millions of years to wind up on a shelf in my room. In spite of its impossibly expanding largeness and our relative ignorance, the night sky seemed familiar and friendly. It is probably for that reason that I have kept an eye on news from the world of astronomy. And there is always a lot of news. Last month, NASA made news, yet again, with its ongoing rover exploration of Mars. The rover named Perseverance collected soil samples from a crater that could potentially contain evidence of ancient life on our rusty-colored neighbor. That is pretty exciting stuff! The Chinese also recently made headlines reporting the results of their Mars rover. They have found evidence indicating that water flowed much more recently on the planet than previously thought. With water considered basic for the possibility of life, it puts us one small step closer to demonstrating that life has existed (or still does) somewhere other than planet earth. The search for signs of life beyond the earth, any kind of life, is one of the most exciting going on today. Many believe that it is just a matter of time before there is irrefutable proof of the existence of life elsewhere. The numbers are pretty staggering.



John Glenn
Astronaut

As of May 2023, scientists have confirmed and cataloged a total of 5,366 planets outside our solar system. That might seem like a lot. But it really does not even begin to scratch the surface



Pastor Mike

pastormikebrown@bethel-madison.org
419.345.2836

of what is probably out there in our own galaxy. The Milky Way has an estimated 200 billion stars, with one in five Sun-like stars having at least one earth-like planet. Run the numbers and we find that this galaxy has 11 billion planets that are potentially habitable. Whether that turns out to be the case or not, is a matter of science. What it means spiritually is a matter of faith.

Over time, Christians have had a complicated relationship with science. At times, they have been among the leading scientific thinkers and provided great breakthroughs. At other times, they have been among the most suspicious and hostile to scientific perspectives. When it comes to the possibility that there might be life in other parts of the galaxy and universe, I encourage you to see science as friend. What would it mean if science finds life, even intelligent life, in other parts of the universe? I think it means several things. Among them, we can say:



“To look out at this kind of creation out here and not believe in God is to me impossible.”
-John Glenn, on his second space flight on space shuttle Discovery in 1998.

1 It’s what God does. You can’t get past the first verses of the Bible without facing head-on the bold and blunt claim that God creates life. It is God’s nature. All throughout the Bible, we can see that wherever God is, there is life. It would be oddly out of character for God if there was no life anywhere else. Seems like an awfully big waste of space.

2 God leaves no void. In Genesis 1:1 it says that “In the beginning... it was formless and void, darkness...” Then, God brings order. God creates conditions for the emergence of life. Wherever there is formlessness, void, and darkness, God generates conditions for life. This is not a one-and-done sort of thing. It is something that God does over and over again. God is continually creating. The most accurate translation of the verse in Genesis says “In the beginning, when God began creating...”

Creation is on-going. The fact that the universe continues to expand is proof of that. More and more universe is being created all the time and at faster and faster pace. Yay God!

3 God’s rescue plan includes all life, all energy, and all matter throughout the universe. God is not just God for our zip code

in the universe. God is God of all. Sin has not just affected our little neighborhood at the third rock from the sun. Sin has thrown-off the entire cosmos (Romans 8:18-25). In Jesus taking on created form, God redeems the entire universe. A favorite passage of scripture is John 3:16, “For God so loved the world that...” The important thing to see is that the Greek word of “word” is “cosmos.” It means the entire created order – the universe.

4 Jesus is present throughout the whole fabric of the universe. The Bible says that in Jesus “all things hold together” (Colossians

1:15). “All things” means the whole created order, the universe.

Some critics of Christianity claim the discovery of “aliens” or extra-terrestrial life would destroy organized religion or invalidate the Bible. That is simply just not the case. Making such discoveries would simply be more evidence in

support of the Christian experience and story. Astronauts such as John Glenn actually found their trip to space to bring them closer to God and to a deeper faith. May your summer be filled with nights of star-gazing, finding life, and saying “praise the Lord.” 🌈

**The heavens
declare the
glory of the
Lord.**

-Psalm 19:1



JUNE SERMON SERIES

God at the Movies

Stories have power, and almost nothing captures the power of story better than a good movie. With this in mind, Bethel’s “God at the Movies” sermon series will use scenes from Hollywood films to help illustrate God’s story in Scripture. The whole idea of this series comes straight from the methods of Jesus. One quick glance through the Gospels, and you will see how many times Jesus used parables—captivating and culturally relevant stories that helped people more clearly understand the grace and hope of God. The storytelling medium of our generation is movies. “At the Movies” will begin during weekend worship services from June 4 – July 9. 🌈



SUNDAY SCHOOL WRAPS UP

What an absolutely delightful, Christ-filled school year our kids and youth have had! With confirmation classes culminating in a beautiful rite of “Affirmation of Baptism” during worship May 7, the younger kids singing three rousing and heart-felt songs in worship on Mother’s Day, and Bible-gifting to all kids 0 years old through 6 th grade on May 21, our last day of Sunday school, we all truly have been blessed in faith and love as God’s grace is infused and pulsates in our life together here at Bethel. The teachers, leaders, volunteers, and all of our congregation’s prayers surely have put a huge smile on God’s heart. Our Sunday school will resume on Rally Day, September 10, 2023 with Spark’s Jesus-centered curriculum, our wonderfully faithful teachers, and our seeking, energy-filled learners. But, until then.....we look forward to seeing you and sharing love and hugs in worship as well as at Bethel Horizon’s Camp! 🌈



June 4

Top Gun: Maverick
Top Reasons to Give It All



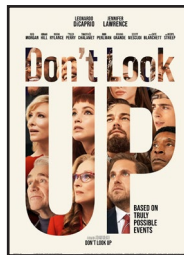
June 25

Everything, Everywhere, All at Once
The Power of Living in the Moment



June 11

Maybe I Do
Living Through a Midlife Crisis



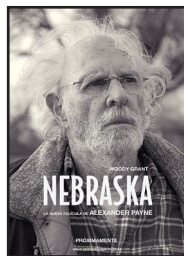
July 2

Don't Look up
The Case for Love of Country



June 18

Avatar: The Way of Water
Succeeding at Fatherhood



July 9

Nabraska
How to Face the Past

ADOPT-A-SCHOOL “LUNCH AND LEARN” SESSION

Tuesday, June 6

You are invited to attend a “lunch and learn” meeting in Bethel’s Emmaus Room on Tuesday, June 6, from 11:30-12:30. Bring your own “brown bag” lunch or just enjoy a coffee. Have you been wondering about how to put your faith into action? We have invited Mary Bartzen, Community Partnerships Director of the Madison Public Schools Foundation, to share stories with us about the opportunities for partnership with a school. 🌈

CONCERTS ON THE SQUARE

Wednesday evenings at
7pm on June 28 and
July 5

Concerts on the Square – Join your friends at Bethel for the iconic Concerts on the Square, Wednesday evenings at 7pm on June 28 and July 5

We will be hosting a table and “trying” to save a space for you across from the US Bank. Our table will be located between the sidewalk and the street. Look for an orange tablecloth and our banner. Bring your chairs, food and beverages and join us!

¡Viva Tiempo Libre! (June 28) and Contrastes (July 5) are performing! 🌈



SUMMER

Bike-A-Thon

This year marks the 38th Annual Bike-A-Thon for Bethel Horizons. What started as a fundraiser to build community and awareness of Horizons’ budding Adventure programs has grown into an annual event that provides transformational experiences in nature through affordable field trips and programming at camp.

What started as a nice drive in the country, to the congregational picnic, turned into a lifelong love of service to Bethel Horizons for Mary Lou and Phil Dzick.

“It was that first view that did it for me,” said Mary Lou beaming. “After that we volunteered for every work day at Horizons.”

“Whenever something needed to be done at Horizons people pulled together,” said Mary Lou.

“There was a role for everyone. If you weren’t a builder you could mow the lawn or help with landscaping or provide meals at church. Horizons has always been a community coming together to get things done. We made so many new friendships with people from church this way, too,” said Mary Lou.

“It’s people who win,” shared Phil. “You can have the best facilities and great ideas but it is the people who make it work.”

Phil and Mary Lou are shining examples of those winning people. They continue to live out their passion for fellowship and volunteering through the Bethel Horizons Bike-A-Thon. The Dzicks have been organizing and contributing to the Bike-A-Thon for over 30 years. They bring together a dedicated group of people who share their passion for creating transformational experiences in nature.

Their commitment to this event raises tens of thousands of dollars each year to keep field trips to Horizons affordable so that students can spend hours in nature through adventure and environmental education programs.

We are so grateful to the Dzicks for their lifelong commitment to Horizons and to everyone who donates their time through volunteering and fundraising to support programming at Horizons. Please join us on Saturday, June 3, 2023 to make the 38th annual Bike A Thon the most successful ride yet. 🌈



AT BETHEL



ANNUAL PICNIC

June 4 at Bethel Horizons

GATHER AT OUR ANNUAL PICNIC!

It's that time of year when we drive through the rolling hills on our way to Bethel Horizons to gather together for our annual picnic. We invite you to join us for good food, fun and fellowship! You will be surrounded by over 500 acres of beautiful nature where you can connect with God, yourself and others.

SCHEDULE:

12:00pm Arrive

12:30 - 2:30pm Meal & Dessert

12:30 - 2:00pm The Dang-Its bluegrass band

A full schedule will be available at Horizons. Kids can visit the Nature Center, play in the bounce house or wander the trails. Feel free to bring a lawn game! A corn hole game and lawn darts (soft tips!) will be set up outside the Art Shack. Game on! Gator rides will be available to any needing a bit of help to get up or down the hill from the parking lot or over to the Barn Retreat Center for dessert. Are you going to the picnic and

have room for others? Do you need a ride? Let us know and we will connect you! Call Jeff Bittner at (608) 257-3577. Are you able to bring a pie or other dessert to the picnic? We'll ask when you register. Upon arrival, head to the Barn Retreat Center to drop it off. The grounds will be well marked. There are a few ways to Register!

ONLINE on the Realm website.

CALL Jeff Bittner, our Hospitality Coordinator, at (608) 257-3577 and he will assist you.

When you register, you will be asked about dietary restrictions of all those in your party, can you bring a pie or other dessert and if you can help out by volunteering. Meal prepared by Horizon's very own Chef Cena.

Please be sure to thank all those with Horizons and the Community Ministry team that work so hard to make this event a success! Questions? Contact Sue Rogers at oldawgs@yahoo.com or reach out to her on Sundays. 🍀

TRANSITIONS

by baptism

none

by affirmation of faith

Zoe Engelke
 Mercy Knoflicek
 Maddie Kublank
 Hannah Lenz
 Kent Mullen
 Lauren Scheib
 Nolan Trine
 Ella Turcott
 Brady Zoellick
 Riley Zoellick
 Mia Mistele

by marriage

none

by death

Ina Mae Storandt 4/23





CONCERT SERIES

When Pastor Mike first approached me with the idea for a new concert series at Bethel, I thought it was extremely ambitious. But now in a second year, I couldn't be more pleased with the concerts. To date, we have presented eight concerts... three in 2023. We have had the highest quality performers and a diverse mix of soloists and small ensembles; Keyboard, Voice, and Instrumental musicians. This really doesn't happen anywhere else.

I thought you might like to know that the performers have also had such positive experiences at Bethel. Many small touring acts end up in irregular spaces...small venues or some low-ceiling room that is unforgiving to music. Every performer has said Bethel is a lovely place to perform. The sanctuary is a beautiful space and has a beautiful sound. You could see the relief on some of their faces when they go in to warm up, and just immediately see and hear... this one is going to go well.

Don't forget to visit bethel-concertseries.com, and click "performances" to see videos of the past concerts. Thank you so much to the foundation.

Benjamin Skroch, Concert Series Coordinator

April, 2023 🌈



COMMENTS ON PLAYING MUSIC FOR BETHEL

As a performer, the most thrilling things that we get to do is to play for an appreciate audience. The congregation at Bethel has demonstrated time and again that they really appreciate what we do. It's an honor to play for them and support the community there.

Josh Biere, Tuba

I've loved playing the Lutheran worship music since I was in high school, but usually the opportunities to play brass music in a church are rare, and not always in the same place. It is such a treat to have a musical home, play with talented musicians, and contribute to something important... the services and worship at Bethel. Thank you so much for including us and for your support.

Benjamin Skroch, Trombone

One of my favorite experiences of playing with the Bethel Brass this year was Easter Sunday. Getting to share the joy of music with the congregation that morning was particularly special. The Good Friday music special was also a great experience to create.

Robert Rockman, Timpani and Percussion

It has been wonderful having the opportunity to make music at Bethel Lutheran each Sunday. The sanctuary is a beautiful space for brass playing, the people are friendly, and the level of musicianship is quite high. The Christmas and Easter services are always a highlight, and it is an honor to add meaning with our music to these important days.

Dr. Michael Hackett, Assistant Professor of Jazz and Commercial Music at The University of Wisconsin-Whitewater 🌈





FRIENDSHIP CLUB

June 8

Bethel's supported group; Friendship Club provides ANYONE with Christian Fellowship, growing in God's love and sharing this love with each other. The last Friendship Club dinner until October will be Friday, June 8, 2023. Assorted appetizers at 5:30 and 6:15 for brats and hamburgers, buns, baked beans, fruit salad and strawberry shortcake. The location for our picnic and last meeting of the year is Lakeview Park in Middleton. Please do NOT park in the grass. The New Horizons

Swing Band, directed by Mark Saltzman, plays traditional concert band music, which includes classical selections, marches and Broadway and movie themes.

The cost is \$12 for EVERYONE! Please remember to call Judi Griffin 608 222 9290 by noon the Tuesday prior to the Friday dinner if you need to cancel. Cancellations after the deadline will be charged. Come enjoy our end of the year picnic! 🎉

MADISON SYMPHONY ORCHESTRA CONCERT

June 24, Penn Park, free admission

Join the Madison Symphony Orchestra in collaboration with Mt. Zion Gospel Choir and Associate Conductor Kyle Knox for a free community concert at Penn Park. Bring the family for an afternoon at the park with live music and food trucks! More details will be available soon.

PROGRAM

Antonín Dvořák, American Suite in A major, Movement I
Timothy Wright/Leotha Stanley, Trouble Don't Always Last
Jill Jackson/Leotha Stanley, Let There be Peace on Earth
Orlanda Draper/Leotha Stanley, Praise the Lord Everybody
Florence Price, **Symphony No. 1**, Movements III & IV
Giuseppe Verdi, Overture to La forza del destino
William Grant Still, Symphony No. 1, Movement III
Aaron Copland, Dance Episodes from Rodeo, Movements III & IV

FEATURING

Kyle Knox, Associate Conductor
Mount Zion Gospel Choir, Tamera and Leotha Stanley, Directors 🎉



MALLARDS GAME

August 10

Sign up today! The game is Thursday, August 10th @ 5:05 pm. The Ticket Deadline is August 3rd. All tickets are mobile and ordered via the link on the flyer. \$22 for food and beverage (soda), \$29 for food and beverage (beer). Pepsi Pre-game package includes food and beverage for 90 mins (60 mins before first pitch and 30 mins after). If you have a child under 5 that does not require their own seat they are free. Use the QR code to sign up! 🎉



JOB OPPORTUNITIES AT BETHEL

Resident Security Opportunity at Bethel available. Tasks involved average less than 20 hours weekly, in exchange for living rent free in two bedroom apartment with utilities included. Contact employment@bethel-madison.org for more information and to apply. More jobs can be found on the Bethel website on our Employment Opportunities page! 🎉



ADDRESS SERVICE REQUESTED

NONPROFIT ORG
U.S. POSTAGE

PAID

MADISON, WI
PERMIT 602

BETHEL

LUTHERAN CHURCH

312 Wisconsin Avenue
Madison, WI 53703

XYZ ACTIVITES

June 9th lunch is build your own salad bar

June 23rd Lunch is a picnic

June 29th Bus trip to White Pines theater

July 14th TBD

July 28th no meeting at Bethel-
---Boat cruise on the Wolf River.
Registration closes on June 23rd.

Meetings start at 9am, chapel at 9:30am. 🌈

APRIL 2023 YEAR-TO-DATE FINANCIAL SNAPSHOT

	YTD Actual	YTD Budget	Variance
REVENUES			
Offerings	524,295	535,567	(11,272)
Miscellaneous revenue	40,665	78,032	(37,367)
Non-operating revenue	800	(250)	1,050
Total Revenue	565,760	613,349	(47,589)
MINISTRY INVESTMENTS			
Staff	405,271	459,675	(54,404)
Ministry & Resource Teams	132,799	114,812	17,987
Benevolence	10,158	9,334	824
Administration	36,011	29,383	6,628
Other	-	-	-
Total Ministry Investments	584,239	613,204	(28,965)
Total Net Income (Loss)	(18,479)	145	(18,624)

A complete copy of the financial statements are posted to Realm;
you can access these through your Bethel Realm profile.



bethel_madison



Bethel.Lutheran.Madison.WI



bethelmadison



BethelLutheranTV

Worship Times: Sunday at 7:30am & 9am - Traditional; 10:30am - Contemporary
Saturday at 5pm - Acoustic Casual

