



BETHELITE

MAY 1, 2023: VOL 72, NO.5

THIS ISSUE:

CONFIRMATION WEEKEND

MAY 6 -7

Page 3

SUNDAY SCHOOL
YEAR END

Page 4

PRACTICING FOOD
JUSTICE GOD'S WAY

Page 5

MOTHER'S DAY
MAY 14

Page 6

TRANSITIONS

Page 7

FAMILY CAMP
JULY 4-7

Page 10

BIKE-A-THON
JUNE 3

Page 11

A RESURRECTION WAY FORWARD

For years, he was called a “madman” for hammering away at the rocks near his village in India. But Dashrath Manjhi was not crazy. He was, however, determined. In fact, now he is considered a legend in his community for cutting a path by hand through a small mountain to help his entire village. The mountain was also the mountain where his beloved wife, Faguni Devi, sustained a life-threatening injury in 1959. Unable to receive medical attention in time at the nearest hospital located on the other side of the mountain, she died as a result. The mountain blocked her receiving timely medical attention. Inspired by his wife’s tragic death with no more than the tools in his hands, Manjhi literally singlehandedly carved a path for his village to the hospital. Armed with only a sledge hammer, a chisel, and a crowbar, he battered away at the 300-foot mountain. “People told Manjhi that he wouldn’t be able to do it,” said the man’s nephew, “that he is a poor man who just needs to earn and eat.” Selling the family’s three goats to buy the hammer and chisels, he labored every day on the project to clear a path. After a day of plowing fields for others, he would turn his attention to the mountain in the evening, often working through the night. Developing his own technique, he burned firewood on the rocks, then sprinkled water on the heated surface which cracked the boulders making it possible to reduce them to rubble. Manjhi said, “When I started hammering the hill, people called me a lunatic but that steeled my resolve.” In 1982, twenty-two years later, the path was opened. With sides 25 feet high, the road is 30 feet wide and 360 feet long. Because of his singular dedication,



Dashrath Manjhi Indian “Mountain Man” Image showing his hammer, chisel, and crowbar



Pastor Mike

pastormikebrown@bethel-madison.org
419.345.2836

the distance to public services was reduced from forty miles to just one. It has been over four decades since the “Mountain Man,” as he came to be called, completed the road. Though he died in 2007, the feat brought him international fame. Upon his death, he was given a state funeral and the Indian Post issued a postage stamp featuring him. It is beautifully inspiring how a loss in life can actually lead to great blessing for many. This “mountain man’s” loss led to great blessing for his village.

As we continue to be carried by the energy and joy of Jesus’ resurrection, we can’t help but think of the great and tragic loss his death entailed. In the loss of his life, he cleared the way for blessing for countless others, you and me included. This is the way God works in our world. God uses the moments in our lives that seem hopeless as tools, as hammers, chisels, and crowbar to make a way where before there was no way. Without minimizing or dismissing



“What has happened to me has actually resulted in the progress of the gospel”
- Philippians 1:12

This is the path cut by the Indian “Mountain Man”

the sorrow and grief, we can look at every mountainous burden as a miracle in the making. Because of Jesus’ presence in our lives, the trials and tribulations we experience are miracles waiting to happen.

The apostle Paul makes the same case when he is arrested and held under house arrest in Rome. One would think that being taken into captivity and put under 24/7 surveillance would be a crushing defeat for the traveling missionary for Jesus. On the contrary, says Paul. You can read his own words for yourself:

“I want you to know, brothers and sisters, that what has happened to me has actually resulted in the progress of the gospel, so that it has become known throughout the whole imperial guard and to everyone else that my imprisonment is for Christ,” (Philippians 1:12-13).

Paul was a prisoner but his imprisonment did not end his missionary activity. It actually expanded it. The word Paul uses for the “progress of the gospel” is a vivid word. It is *prokope* in Greek.

It is the word which is specially used for the progress of an army or an expedition. It is the noun from the verb *prokopetein* which means to cut down in advance. It is the verb which is used for cutting away the trees and the undergrowth, and removing the barriers which would hinder the progress of an army. Paul’s imprisonment, so far from shutting the door, opened the door to new spheres of work and activity, into which he would never otherwise have penetrated. Many if not most Christians wonder how to live

a life of resurrection, how to experience the newness and strength of life overcoming death. While there are few quick and easy answers in the life of faith, there is a clear response forward for us when we stand before mountainous obstacles that threaten to stop us in our tracks. And that response is to ask and trust

God again and again to use the burden and loss as a tool to carve new avenues for life, blessing, and vitality. And should people around you think of you as a lunatic because of your belief, let it steel your resolve to trust evermore in Jesus.



LET IT
STEEL YOUR
RESOLVE TO
TRUST IN
JESUS



CONFIRMATION WEEKEND

May 6 - 7

As the winter weather breaks and gives us hope that spring and summer are coming soon, Bethel's confirmation program will very soon culminate with a weekend full of celebration and promise for 11 of our young believers. Mark your calendars for the first weekend in May and please pray earnestly for Zoe Engelke, Mercy Knoflicek, Maddie Kublank, Hannah Lenz, Kent Mullen, Lauren Scheib, Nolan Trine, Ella Turcott, Brady Zoellick, Riley Zoellick, and Mia Mistele as they prepare their personal faith statements and final confirmation projects.

The celebration weekend begins with our "Faith Statement Banquet" in Borgwardt Hall on Saturday, May 6, 10AM-12PM. Families and friends are invited to join us for a Brunch Banquet where confirmands will be invited to share their faith statements, be prayed over, and awarded their red sashes

and Mission Patches. Please email Karin@bethel-madison.org with the number of people in your party so that we can plan for food!

The celebration weekend continues on Sunday morning, May 7, 2023 at 8:30AM when the confirmands will assemble, robe, and be instructed on the final details of their participation in our Affirmation of Baptism ceremony which will be an important element in the 9AM traditional worship service that day. They will process down the aisle to be recognized and prayed for by the whole assembled congregation including their family and closest friends. After the service, the congregation is invited to warmly congratulate them and acknowledge this memorable event with hugs, cards of encouragement and support, words of faith and wisdom, Godly love, and delicious cake! 🍌



SERMON SERIES: RISE AGAIN FAMILIES

The power of God that resurrected Jesus from death is the same power that God brings into our lives through our union with Christ. In the New Testament language of Greek, God's power is *dunamis*, from which we get the word "dynamite"! God's power is a dynamite force that reshapes and reorders the world around it for the good. It breaks apart and shatters the hold death and darkness have in our lives. It is a power that God shares freely with us in building homes, families, and a future. In this sermon series, RISE AGAIN FAMILIES, Pastor Mike will share the Bible's message of how to draw upon this power time and time again when tragedy, brokenness, and death threaten to take them down. Even when broken, your family can RISE AGAIN!

"This power working in us is the same as the mighty strength which he used when he raised Christ from death and seated him at his right side in the heavenly world." --Ephesians 1:19-20

APRIL 23: What Makes A Family

APRIL 30: Loving When It Is Hard

MAY 7: Thriving through Change

MAY 14: Finding New Life

MAY 21: Don't Grow Old, Grow Up 🍌

XYZ MEETING DATES

Friday, May 12th at 9am

No meeting on May 26th
- Memorial Day holiday

Sign up deadline for trip to see Remembering Red Skeleton is May 17th.

Sign up deadline for cruise on the Wolf river is June 23rd. Payment to XYZ is due at sign up.

Everyone over 55 years are welcome to join our activities.

Contact Sue Marking at wmarking@msn.com

NEW LIBRARY BOOKS

Chicken soup for the single's soul: stories of love and inspiration for the single, divorced, and widowed. Jack Canfield(compiler) 1999

Chicken soup for the unsinkable soul: 101 inspirational stories of overcoming life's challenges. Jack Canfield et al 1999

Queer virtue: what LGBTQ people know about life and love and how it can revitalize Christianity. Elizabeth Edman 2016

Women and the Christian story: a global history. Jennifer Wojciechowski 2022



SUNDAY SCHOOL END OF YEAR GIFT FOR ALL CHILDREN AGES 2-6TH GRADE

Bethel has had an absolutely wonderful Sunday School year that has been blessed by faithful, loving, and skilled teachers and leaders, kids with energy, growing curiosity, and love for Jesus, parents who are devoted to enriching their kids lives by bringing kids to Sunday school, a praying congregation who sees kids as the next generation of faith and peace-filled leaders, and the presence of Jesus in every moment together!

As this school year wraps up, with the last Sunday school session of the school year

on Sunday, May 21, we want to celebrate and give each of our children a special gift bag. As is Bethel's decades-long tradition, we will give each child ages 2 and 4, 2nd grade, 4th grade, and 6th grade an age-appropriate Bible. For the children between those ages, we will assemble gift bags for them too! No child will be left without a tangible gift of encouragement to continue their journey to learn about our devoted God and Savior through the summer until Sunday school resumes again in September.

FOOD PANTRY UPDATE

Thank you very much for your continued support of Bethel's Food Pantry. We appreciate all your donations of personal essential and food items, garden produce, diapers and wipes, spices, egg cartons and monetary donations. They make a difference! A guest recently informed us that for the first time, thanks to our pantry, she did not have to choose between buying food or paying one of her bills. She was so grateful...and relieved!

We continue to need bags of all kinds. We have been able to help other pantries on occasion when we have had an overabundance of bags, so they do not go to waste! Our extra egg cartons go to a man who brings them to Amish farmers. Thanks again for your support of this important Bethel outreach mission!



DO YOU KNOW WHERE YOUR FOOD COMES FROM?

**A just food system
was God's plan all along**

land + water + animals + plants + people
working together in harmony

Learn choices you can make to protect
soil & water - farms and farm jobs - nutrients -
your health and the health of all



ACTJAM Sunday Forums - Big Read - field trips

April 23 - June



PRACTICING FOOD JUSTICE GOD'S WAY

Sunday, May 7 & 21 at 10:30am

Throughout the Bible and especially Jesus' teachings we see that God wants us to connect food with doing justice.

The Roman food system of Jesus' day was one of "haves" and "have nots." Galilee, where Jesus spent 85% of his public ministry, was the breadbasket of Israel but far from bucolic. Instead farmers, fishers and peasants suffered under Roman taxes, rents and tributes. Debt-burdened farmers lost their land which was then mined for its riches of wine, oil, fruit and grain using cheap labor.

Jesus chose to do his ministry among these people. It's no surprise then that Jesus' stories are about planting seeds, harvesting grain and grapes, and casting nets for fish. And no surprise these stories are also about justice.

What if the parable of the sower isn't only about soil but about a farmer's precious seeds -- the need for a diversity (vs. purity) of seeds that can survive the extremes of Galilean farming? Or take the parable of the vineyard owner and the laborers which advises land owners to be generous with laborers and laborers to not be greedy. Then there's Jesus' stunning rebuke of the Roman food system when he fed 5,000 people "for free" with enough food to fill twelve baskets of leftovers.

In God's food system there's abundant food all, for the health of all, not the wealth of a few. Our job is to care for vs. exploit the land, plants, animals and people that produce our food. The Earth will feed us when we take care of it and one another, in harmony, the way God intends.

How can we do this? Join our ACTJAM Sunday forums @ 10:30 to learn where our food comes from -- our food system -- and how we can practice God's food justice.

MAY 7: Laura Paine, U.W. Grassland 2.0

MAY 21: Yolibeth Rangel-Fitzgibbon, REAP Food Group



A hymn of love to the world.
—ELIZABETH GILBERT

BRAIDING SWEETGRASS



Indigenous Wisdom, Scientific Knowledge,
and the Teachings of Plants

ROBIN WALL KIMMERER

FOOD JUSTICE BIG READ:

BRAIDING SWEETGRASS

by Robin Wall Kimmerer

We've been waiting for the right time to feature this beloved book as our ACTJAM Big Read. As a botanist Robin Wall Kimmerer has been trained to ask questions of nature with the tools of science. As a member of the Citizen Potawatomi Nation, she embraces the notion that plants and animals are our oldest teachers. In Braiding Sweetgrass, Kimmerer brings these two lenses together to take us on "a journey that is every bit as mythic as it is scientific, as sacred as it is historical, as clever as it is wise" (Elizabeth Gilbert).

Join the Zoom discussions Wednesday evenings 6:30-7:30 May 3, 10 & 17. Email ACTJAM@Bethelmadison.org for the Zoom link. Community copies of the book will be available starting April 23. We'll use the discussion guide prepared by staff at Longwood Gardens, available at: <https://bit.ly/3AnU9fL>.





CHILDREN TO SING AT THE 9AM SERVICE ON MOTHER'S DAY

May 14 at 9am

You won't want to miss this! The children are preparing 3 songs to sing for the 9 AM assembled congregation on Mother's Day this year, Sunday, May 14, 2023! What joy it brings to all of our hearts to see kids singing about their faith and love for Jesus! In addition, it's always an adventure to see what kids might do up front with their adventurous spirits, honest curiosities about life, church, and God and expressions of their growing personalities! Come Sunday to listen, love, and support our beautiful children. What a treat it promises to be! 🌈



MOTHER'S DAY

THE ORIGIN OF MOTHER'S DAY

Have you ever wondered when Americans started celebrating Mother's Day? The holiday was born out of one woman's desire to honor her mother's life of sacrifice and grace.

Born in 1864 in Grafton, West Virginia, Anna Jarvis witnessed the aftermath of the Civil War through a child's eyes. Her mother, Anna Maria Reeves-Jarvis, had spent the war organizing women to nurse wounded soldiers from both the North and South, and generally attempting to hold her border-state community together. After the war, Anna Maria started "Mothers' Friendship Days" to reconcile families that had been divided by the conflict.

Throughout her life, Anna Maria modeled the ideals of Victorian motherhood. She gave

up her dreams of college in order to tend to an older husband and four children. She bore the loss of seven other children with grace. She taught Sunday school in the local Methodist church for 20 years and stayed active in benevolent work.

Anna Maria's death in 1905 devastated her daughter. Two years later, Anna got the idea to found a holiday remembering her mother, and all mothers, whom she felt could never be thanked enough.

Mother's Day was first celebrated in 1908 in Grafton (where Anna grew up) and Philadelphia (where she lived as an adult). Later, in a resolution passed May 8, 1914, the U.S. Congress officially established the second

Sunday in May as Mother's Day. 🌈



2023 CHURCH COUNCIL

President, Donna Ulteig
 Vice President, Denis Vogel
 Past President, Soren Schoff
 Treasurer, Paul Aspinwall
 Assistant Treasurer, Laurie Plum
 Secretary, Steve Young
 Lead Pastor, Pastor Mike Brown
 Nurturing Ministry Team, Carrie Bernhardt

Council Member at Large, Margie Czechowicz
 Lifelong Learning Ministry Team, Kris Fansler
 Council Member at Large, Euan Ford
 Human Resources Team, Jeanne Hilton
 Serving Ministry Team, Bev Priefer
 Community Outreach Ministry Team, Sue Rogers
 Council Member at Large, Tom Solheim
 Worship Ministry Team, Larry Veleke

S DAY AT BETHEL



LUTHER AND THE “CHURCH MOTHERS”

Many women have found Luther’s message appealing and empowering. In 16th-century Wittenberg, women flocked to listen to the preacher and sought his pastoral counsel, especially mothers who had buried their unbaptized children, whose teenagers had eloped or whose husbands had left. For the empowerment of women in their vocations,

Luther and fellow reformers established schooling for girls and secured a common chest that would have funds for widows, orphans and poor maidens.

Luther even offered hospitality to women in need at his home. A most difficult

houseguest (per his own words) was the eccentric noblewoman Elisabeth von Brandenburg (1485-1555), who was exiled because she confessed to the Lutheran faith.

Luther’s teaching of marriage and motherhood as holy God-instituted vocations had an enormous impact on women’s self-worth. When he married (1525), Luther shared his ministry with his wife and had, in many ways, his theology tested with real life experiences. Through the women in his life, his view of

God evolved. His last lectures on Genesis reveal his earnest fascination with all matters female and gender issues. His letters evidence his respect of the valiant reforming women who are “out there” in every community. 🌈

BRUNCH SUNDAY
MAY 14
10am - 12:30pm
\$10/person
\$30/household

TRANSITIONS

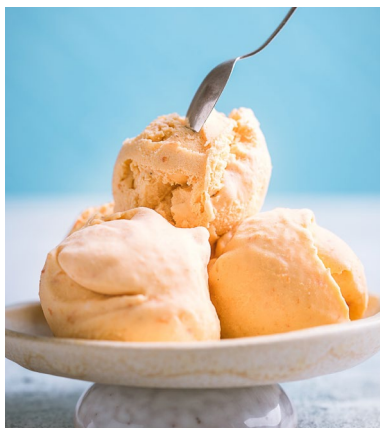
by baptism
none

by affirmation of faith
none

by marriage
none

by death
Tom Nelson 3/2
Kate Reed 3/9
Gisela Kutzbach 3/23
Bev Hanson 3/24
Joyce Russell 4/17





VOLUNTEER ICE CREAM SOCIAL

May 7 at 10am
Borgwardt Hall

Volunteer Appreciation Sunday
Ice Cream Social, May 7 at
10am in Borgwardt Hall.

Join us on Sunday, May 7 from
10am-Noon as we celebrate our vol-
unteers and their families with an ice
cream social. We want to say thank
you for being the hands and feet of
Jesus. Thank you for offering your
time and talents in service to Bethel
and our Lord Jesus.

“There are varieties of gifts, but the
same Spirit; and there are varieties
of service, but the same Lord.”

—I Corinthians 12:4-5

We praise God for the gifts he has
given you and your generous heart
to share them. We can't wait to cel-
ebrate YOU! This event is hosted by
the Serving and Community Ministry
Teams. 🌈



“PAINTWORKS” BY MARLA J. BRENNER

Art Exhibition, May 1 - June 30, Gallery Hallway

Meet the Artist Reception, May 21, Gallery
Hallway, 10:30am - Noon

Marla Brenner's career has combined
painting with graphic design, creative
direction and art instruction. She works
primarily in oil and gouache but also employs
her pens, pencils, pastels and watercolors.
Marla is nationally recognized for her
landscapes, still life, figures, domestic animals
and wildlife paintings.

As a creative director for three
national award-winning magazines and
several award winning regional, national and
international marketing campaigns. Marla has
honed her skills in communication, concept
development, art direction and design. In
addition, her experience includes twenty-five
years of teaching in the field of fine art and
graphic design.

A graduate of the University of
Wisconsin-Madison in art and education Marla
remains a dedicated student. She brings to

her artwork and instruction the wisdom and
experience of several present-day masters
with whom she has studied as well as her own
years of experience in the field.

Marla's paintings have been
accepted into several National and
International Exhibits including “Birds in Art”,
“American Society of Impressionists” and
“Oil Painters of America.” Her work has been
published in American Artist Magazine and
is represented in both private and corporate
collections throughout the United States and
Europe.

Marla's work as well as more
information on her extensive career can be
found on her website marlabrenner.com
To view “Paintworks” Solo Show online [https://
marlabrenner.fineartstudioonline.com/works](https://marlabrenner.fineartstudioonline.com/works)



BETHEL CONGREGATION ANNOUNCEMENT

Dear Bethel Congregation,

It is with regret that we announce the resignation of Zach Busch, Minister of Liturgical Worship, who submitted his resignation on Tuesday, April 4. In response to this sudden and immediate resignation, our Joint Council leadership, the Human Resource Team and Pastor Mike have quickly found a temporary Choir Director and organists to assure that our music program continues to flourish.

We are pleased to announce that Jacob Voigt will serve as our interim Choir Director. A well credentialed, accomplished musician and director, Mr. Voigt is a member of Immanuel Lutheran Church in Watertown, a faculty member of the New York Film Academy, and has worked with Katie Gerlach and the Contemporary Worship Team. We are excited that he will serve Bethel.

We are also grateful to Greg Zelek, Principal Organist of the Madison Symphony Orchestra, Gary Lewis, our former Music Director, and Ken Sosinski, who currently serves as Music Director at Wellspring United Methodist, for agreeing to fill in to play the organ during this transition. Ken holds a Master of Divinity degree From Union Theological Seminary in New York and has Directed Luther Memorial's Children's Choir.

We would like to thank Katie Gerlach, Luke Hrovat-Staedter, the Bethel Choir, and all the musicians who stepped in during Holy Week, providing the congregation with outstanding music. Their dedication and hard work are deeply appreciated.

In the coming months we will keep you informed as we search for a permanent music director. We are grateful for Zach's service and the music program that evolved under his direction for the past 1 1/2 years.

We thank you for your continued support of our music program at Bethel.

Sincerely,

Executive Committee of the Joint Council

Bethel Lutheran Church

By Donna Ulteig, President




MAY FRIENDSHIP CLUB DINNER

May 12 at 6:30pm

Bethel's supported group; Friendship Club provides ANYONE with Christian Fellowship, growing in God's love and sharing this love with each other. The next Friendship Club dinner will be Friday, May 12, 2023. Dinner is served at 6:30pm in Borgwardt Hall. Dinner will be fried chicken, garden salad, vegetable, rice pilaf, rolls and dessert.

John Hueschen will be our spiritual leader. Deliberate Vibration Quintet will perform for our enjoyment. Are you frightened of musical instruments? Do you live in dread of being attacked by a feral orchestra? If you've been seeking music free from terrifying trumpets, pernicious piccolos, and snarling saxophones, look no further than Madison Wisconsin's Deliberate Vibration! Formed in 2012, the members of D.V. will be happy to share instrument-free music, from oldies to modern music!

The cost is \$12 for previous members, \$15 for visitors. Please remember to call Judi Griffin at 608-222-9290 by noon the Tuesday prior to the Friday dinner if you need to cancel. Cancellations after the deadline will be charged. Carry outs are available.

Looking forward to seeing you in May! 



VACATION BIBLE CAMP 2023

July 31 - August 3

Join your friends from Bethel for faith, fun and friendship at Bethel Horizons in Dodgeville.

Overnight camp is available for ages 8-18. Children younger than 8 are welcome to attend with a adult.

Day-camp is available for ages 5 and up, and day-campers are responsible for their own transportation.

DAY-CAMP

Cost \$105/person

Transportation available to and from Grace Lutheran Church, Dodgeville.

Depart from Grace at 8am.

Pick-up at Grace at 5:00pm.

OVERNIGHT CAMP

Cost \$130/person

Arrive by 9am on Monday.

Depart by 4:30pm on Thursday.

Transportation available by bus, departing from and arriving to Bethel.

For more information or to register follow the link to the Bethel Horizons Website.

QUESTIONS?

Contact: Heather Moen

heather.rainwater@yahoo.com 



FAMILY CAMP

July 4 - 7

IF REGISTERING AS A FAMILY: When starting the registration, please only enter your name. You will have an opportunity later to add names and ages for remainder of your family. This ensures you are only charged the family rate once instead of per person. Thanks!

Join us for the 3rd year of this fabulous event!

WHAT CAN YOU EXPECT? A fun-filled week of Horizons activities including all your old favorites plus a bunch of new traditions. Throughout the week, some options we're exploring include hiking, swimming, biking, service projects, ropes/cliff adventures, art activities, campfires, group activities/games, kid-friendly entertainment, adult nights out, and of course, campfires!

WHO WOULD ATTEND?

Our goal for this program is a group of people comprised of any combination of solo adults, couples of any age, and families of all shapes and sizes.

LODGING AND FOOD? We have plenty of room to space out; you'll be able to reserve your own space in the Prairie Center, Barn Retreat Center, or Tent & Trailer campground. Leave the cooking to us - all meals will be provided. We can accommodate dietary restrictions, the registration will ask if there are any

dietary restrictions. *If you would like to stay through Saturday (no programming or food provided beyond Friday 4:00pm), please contact bethelhorizons@bethelhorizons.org to arrange an additional nights stay.

WHEN IS IT? Family Camp @ Horizons will begin on Tuesday, July 4th, and go through Friday, July 7th. We hope to see you for all 5 days of fun, but do come/go as your schedule requires.

WHAT ABOUT COVID? CDC approved policies for camps and retreat centers


will be followed. Full description of policies is at this website: <http://www.bethelhorizons.org/coronavirus-covid-19-update/>

QUESTIONS: please contact Heather at heather.rainwater@yahoo.com. We hope

you're as excited as we are and will join us for Family @

Horizons!

REGISTER HERE

or on the Realm website for Bethel under Events! 





BIKE-A-THON

June 3

This year marks the 38th Annual Bike-A-Thon for Bethel Horizons. What started as a fundraiser to build community and awareness of Horizons' budding Adventure programs has grown into an annual event that provides transformational experiences in nature through affordable field trips and programming at camp.

"In a world where people spend hours on screens and minutes outside, you can reverse that and help people spend hours outside and minutes on screens." says Phil Bramley, Horizons Adventure Director and Bike-A-Thon Committee Chair. The Adventure & Environmental Educations programs at Bethel Horizons provide hundreds of affordable field trips to thousands of students every year.

We all know that more time in nature is better for our overall mental and physical health and today's young people are in need of this connection and experience now more than ever. It's almost overwhelming to look back

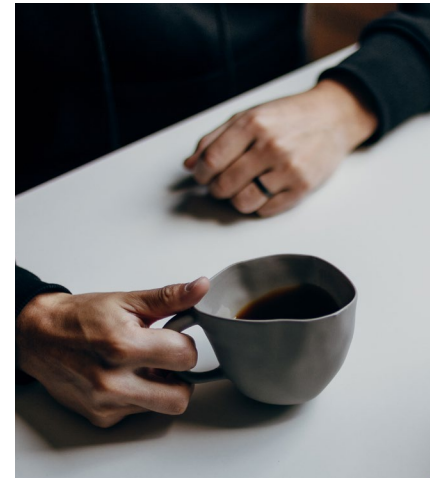
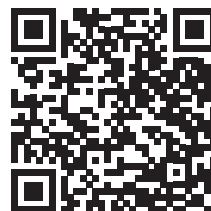
over the last 38 years to see how advances in technology have put the world at our fingertips, and yet students today are more isolated and disconnected than ever before.

Please join us on Saturday, June 3, 2023 to make the 38th annual Bike A Thon the most successful ride yet.



When you participate in the Bethel Horizons Bike-A-Thon you are a part of a community that directly impacts students by providing the funds needed to allow Horizons to keep the cost of these field trips affordable for schools. It's no secret that school funding

and support are limited for these types of experiences, but you can ensure transformational experiences in nature continue to benefit the next generation to help them R.I.S.E. above any challenge. 🌈



CURRENT MEN'S CHRISTIAN CONCERNS

Thursdays at 8:30am in Room 201

If you're a man these days it seems easy to get your days started off on the wrong foot by accidentally saying the wrong thing or asking the wrong question. But, on Thursdays at least, there is a way to start your day off right. Come to Men's Current Christian concerns at 8:30 in the morning for one hour. In this group you can never say the wrong thing or ask the wrong question. Those who attend MCCC are all used to saying or doing the wrong thing so you are surrounded by understanding, accepting men in addition to drinking excellent coffee. For questions, contact Larry Larrabee 608-249-9982.

MAY 4 Is it Bad to be Good?

MAY 11 Are Wages the Cure for Inflation?

MAY 18 Guy Talk

MAY 25 The Health of the Dane County Economy





ADDRESS SERVICE REQUESTED

NONPROFIT ORG
U.S. POSTAGE

PAID

MADISON, WI
PERMIT 602



BETHEL

LUTHERAN CHURCH

312 Wisconsin Avenue
Madison, WI 53703

FUND FACT\$

3 In 2022, Bethel received six stock gifts (even in the down market year!) for various related ministries, and the total value given was \$245,877.

4 Gifts given to support Bethel's operating budget last year came from 730 households, and 56% of these were planned pledges of support. 🌈

MARCH 2023 YEAR-TO-DATE FINANCIAL SNAPSHOT

	YTD Actual	YTD Budget	Variance
REVENUES			
Offerings	425,270	401,675	23,595
Miscellaneous revenue	34,883	58,524	(23,641)
Non-operating revenue	497	(188)	685
Total Revenue	460,650	460,011	639
MINISTRY INVESTMENTS			
Staff	298,328	344,756	(46,428)
Ministry & Resource Teams	101,747	86,115	15,632
Benevolence	7,908	7,000	908
Administration	28,068	22,038	6,030
Other	-	-	-
Total Ministry Investments	436,051	459,909	(23,858)
Total Net Income (Loss)	24,599	102	24,497

A complete copy of the financial statements are posted to Realm; you can access these through your Bethel Realm profile.



[bethel_madison](#)



[Bethel.Lutheran.Madison.WI](#)



[bethelmadison](#)



[BethelLutheranTV](#)

Worship Times: Sunday at 7:30am & 9am - Traditional; 10:30am - Contemporary
Saturday at 5pm - Acoustic Casual

