

EASTER WEEKEND BETHELITE

APRIL 1, 2023: VOL 72, NO.4

THIS ISSUE:

GOOD FRIDAY

APRIL 7

Page 3

EASTER

APRIL 9

Page 4

THE LETTER

Page 6

PALM SUNDAY CONCERT

APRIL 2

Page 8

CONFIRMATION

MAY 6

Page 9

FAMILY CAMP

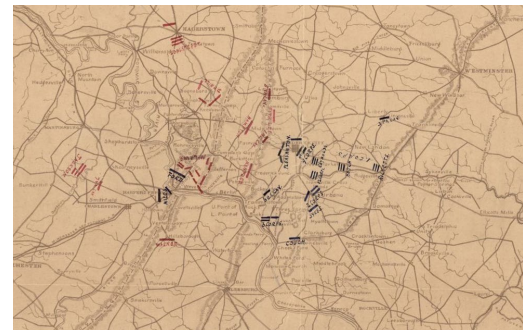
Page 10

THE STARKEY STORY

Page 11

VICTORY, A DONE DEAL

Imagine going into battle with a copy of your enemy's battle plans in your pocket. You would know what the enemy was thinking, where the enemy was heading, and what the enemy was carrying. With that kind of advance knowledge, your success is pretty much assured. Improbable as it might seem, that is precisely what happened during the Civil War in 1862. Between 9:00-10:00 in the morning on September 13, Corporal Barton W. Mitchell was looking for some shade to rest after a long march. Stretching out under a tree along a fencerow, his eyes fell on something nearby that seemed oddly out of place. More curious than tired, he went to investigate. Reaching down, he picked it up off the grass. It was a bulky envelope, wrapped like a piece of paper around three cigars. It was addressed to the Confederate General, D.H. Hill with these words, "Special Order No. 191, Headquarters, Army of Northern Virginia." The document was nothing less than Robert E. Lee's detailed marching orders for the Maryland campaign. Amazed at the incredible find of the Confederate battle plan, Mitchell quickly passed it up the chain of command, which led to another amazing circumstance. The division adjutant general, Samuel Pittman, who received the paper recognized the handwriting. It was that of an army colleague of his from before the war named Robert Chilton. He was the adjutant general to Robert E. Lee. Verifying the plans were real, Pittman took the discovery to Major General George McClellan. Rebel leader Robert Lee had been owning McClellan on the battle field. But now, the Confederate plan was clear. McClellan now knew that Lee's forces were split into five parts and scattered over a 30-mile stretch, with the Potomac River in between. At least eight miles separated each piece of Lee's army, and McClellan was just a dozen miles from the nearest Confederate unit at



Special Order 191
Battle Plans of Robert E. Lee



Pastor Mike

pastormikebrown@bethel-madison.org
419.345.2836

South Mountain. Bruce Catton, the noted Civil War historian, observed that no general in the war “was ever given so fair a chance to destroy the opposing army one piece at a time.” McClellan was obviously pleased to inform President Lincoln, “I have the whole rebel force in front of me, but am confident, and no time shall be lost...I think Lee has made a gross mistake and that he will be severely punished for it ... I hope for a great success if the plans of the Rebels remain unchanged... I have all the plans of the Rebels and will catch them in their own trap...” Having the enemy’s plans in hand is an overwhelming advantage. It was an advantage the Northern Union armies would employ at every opportunity to their advantage. While many lives were lost, victory was definitively gained on April 9, 1865 when Robert E. Lee surrendered to Ulysses S. Grant.

This year, Easter falls on April 9, the same day the Southern Confederacy surrendered. It is a



“Thanks be to God, who gives us the victory, through our Lord Jesus Christ.”
--1 Corinthians 15:57

good reminder because in Jesus Christ, we know what the enemy – Satan - is trying to do. Through his death and resurrection, Jesus unmasked the forces of darkness of this world that mobilize against us (Colossians 2:13-15). The Apostle Paul often described the Christian life as a battle, calling on on “fellow soldiers” to persevere (Philippians 2:25, Philemon 1:2, and 2 Timothy 2:3–4) and to wear their armor (Ephesians 6:10–18). Clothed in Christ (Galatians 3:27), Christians face the battle knowing the end result is assured and can scoff at death with Paul, “Where, O death, is your victory? Where, O death, is your sting?” (1 Corinthians 15:55). Because Jesus knows death’s battle plan like the back of his hand, we live in the light of the certainty of our victory. In the words of the familiar Easter hymn:

“THE STRIFE IS O’RE, THE BATTLE DONE”

Alleluia, alleluia, alleluia!

*The strife is o’er, the battle done;
now is the victor’s triumph won!*

Now be the song of praise begun. Alleluia!

THE STRIFE IS O’ER

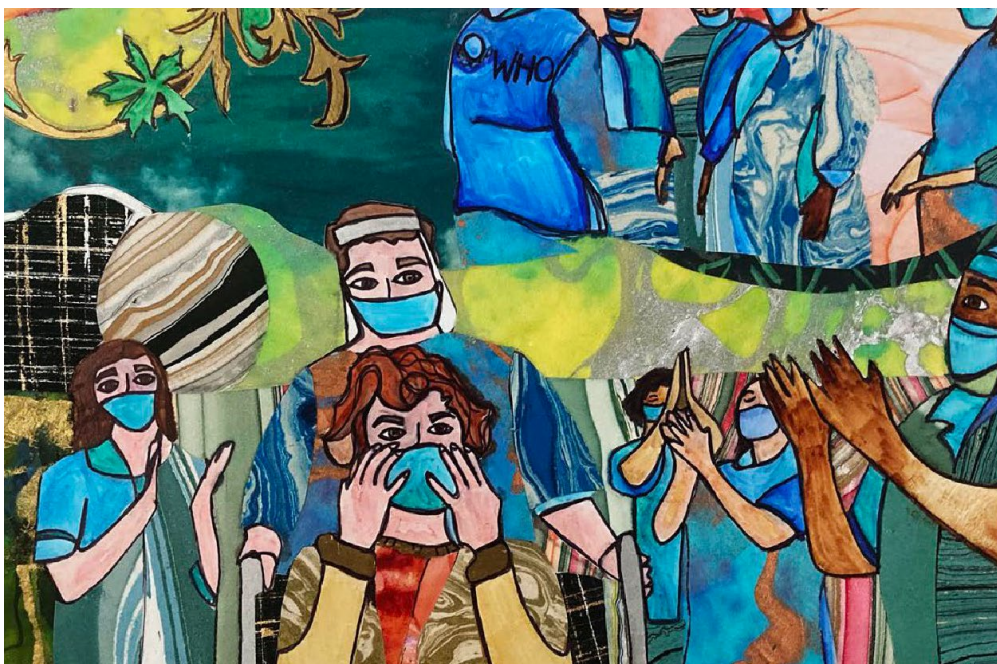
*The pow’rs of death have done their worst;
Jesus their legions has dispersed.
Let shouts of holy joy outburst. Alleluia!*

*The three sad days have quickly sped,
Christ rises glorious from the dead.
All glory to our risen head! Alleluia!*

*Christ closed the yawning gates of hell; the
bars from heav’n’s high portals fell.
Let hymns of praise his triumph tell. Alleluia!*

*Lord, by the stripes that
wounded you, from death’s
sting free your servants too,
that we may live and sing to
you. Alleluia!
Alleluia, alleluia, alleluia!*

In the rough and tumble of a world in rebellion against God and the kingdom of Christ, we are led by a Savior whose victory banners unfurl before us with the cross held high each day. No matter how dark or frightful our plight might be our journey can end only in victory. 🌈



GOOD FRIDAY

April 7

6:30 - 7pm in Good Shepherd

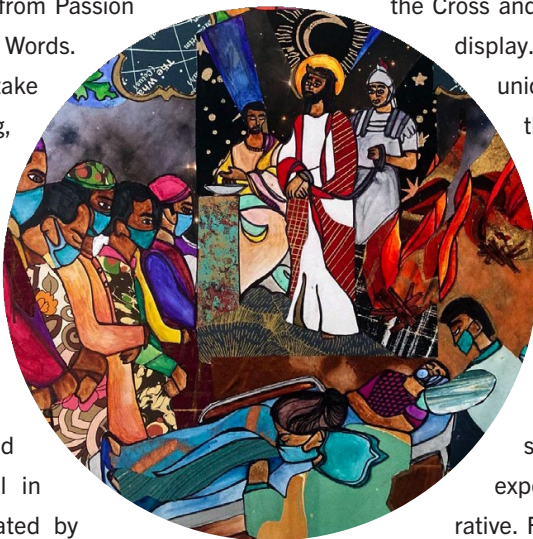
7 - 8pm in Sacred Grounds

8 - 9pm in Sanctuary

This year Good Friday will be organized into three events in three different spaces, moving from story to art to song, from space to space to space, from Passion to Stations to Last Words.

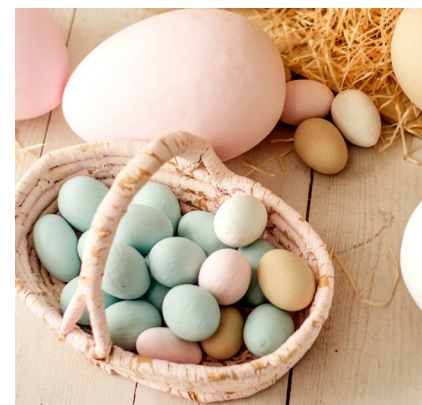
You are invited to take in the whole evening, 6:30 - 9pm, or to come and go as you please. The evening begins with a reading of the Passion according to John seated in the round with the cross will in the middle illuminated by candlelight. Following the Passion

reading, seating space will remain open for prayer and reflection around the cross. A side room will be open with supplies and prompts



to pray through making art. Additionally, an art installation in Sacred Grounds proper will open for viewing. Mary Button's Stations of the Cross and Resurrection will be on display. This particular set is

unique in that it juxtaposes the 8 stations of the cross with 8 narrative events from after Jesus rises. Viewing darkness and light together in this way, along with Button's use of layering, color, pattern, and story, is a powerful way to experience the Passion narrative. Following the this, music in the sanctuary at 8:00pm will culminate the evening with moving and powerful reflections on Christ's passion. 🌈



EASTER EGG- STRAVAGANZA

April 8

10am - 12pm

It's the Easter bunny, Charlie Brown! Please join us on Saturday, April 8, from 10am-12pm for a hopping good time at our first Annual Easter Eggstravaganza!

You've never experienced an egg hunt quite like this before... with face painting, enter-to-win drawings, a petting zoo, crafts, a celebrity-style bunny entrance you may just have to see to believe, and fun booth prizes!

We are asking each child to bring in an egg carton! Each child can stop by our craft center and decorate this carton to their heart's content before going egg hunting. Once the carton is full, they can show their full carton to our prize booth and receive an Easter pail full of goodies to take home.

While children up to sixth grade are busy hunting eggs, parents can enjoy a continental breakfast or join in the fun and take some family pictures at one of the photo booths. We can't wait to see you there! 🌈

EASTER BRUNCH

April 9 in Borgwardt Hall

Join us for a delicious Easter Breakfast on April 9 after the 9am service, in the lower level in Borgwardt Hall. 🌈



PALM SUNDAY CONCERT

April 2 at 2pm
Free Event

Jenn Bostic is a soulful singer/songwriter with a hint of pop, blues and gospel. Her emotive songwriting and powerful vocals have been touching hearts around the world. Her hit song “Jealous of the Angels,” written for her late father, has over 50 million collective streams on YouTube, has gone #1 on various iTunes charts by various artists in the United Kingdom and Ireland. The song was covered by the US Army Band, has been played on Sirius XMs The Pulse and other mainstream ACs reaching that format’s Top 40, and the Positive Country and Southern Gospel Charts Top 10. 🌈



CHURCH IN THE WILD, DINNER, AND A MOVIE

Saturday, April 22

Join Caring for Creation and ACTJAM (A Call to Justice and Mercy) in one, two or all three special Earth Day activities to celebrate the gift of God’s creation and to strengthen our commitment to care for our common home and its inhabitants.

WILD CHURCH: *Wander and Worship in the Wild* (Time and Location TBD)

Not just an outdoor church service, Wild Church sponsored by our South Central Wisconsin ELCA Synod is an invitation to “rest in the grace of the world” (Wendell Berry) as we gather and then separate to wander into nature to see, to listen, to contemplate, and to sense our connectedness to all living things. Finally we rejoice one another to share and offer our gratitude for “the peace of wild things.”

DINNER: (6:00 pm, Borgwardt Hall)

Whether or not you join us for Wild Church, we invite you to enjoy a light meal in Borgwardt Hall before the big show ...

MOVIE: *The Letter* (7:00 pm in the Sanctuary) Get ready for stunning visuals and music on the big screen in our Sanctuary as we show *The Letter*.

Produced by award-winning filmmakers, released last October, featured on PBS, and seen by millions, this documentary tells the compelling story of the *Laudato Si'*; encyclical letter by Pope Francis through the eyes and stories of frontline leaders who are facing the effects of our planet’s ecological crisis. Representing communities of the indigenous, the poor, youth, and science, they journey to Rome and meet with each other and the Pope, building new bonds to face the future with hope.

As a special short feature, we’ll begin with Bethel’s own music video *Suite Prayers for Our Earth*. Composed by our

Zach Busch and Minneapolis songwriter Bret Hesla and beautifully sung by the Bethel Choir, *Suite Prayers* is a musical setting of the moving “Prayer for our Earth” that concludes the *Laudato Si'* encyclical. Even if you’ve seen it on YouTube or when it premiered at Bethel last November,

you’ll find *Suite Prayers* even more moving on our big screen. Don’t miss these 90 minutes of beauty and inspiration!

QUESTIONS: Todd Fansler, tfansler@wisc.edu, 586-921-7442. 🌈





HELD BY LOVE:

The Starkey Story

In the most recent episode of Bethel TV's True Stories of Faith, "Held by Love," Hank and Sharon Starkey share how God carried them through the horror of their beloved son, Mark, being shot to death by a homophobic drifter passing through Madison by upholding them with the community at Bethel Lutheran Church.

Born with a hole in his heart as the second child to Bethel members Sharon and Hank, Mark eventually had heart surgery at the age of five. When he came out of surgery the next day, Sharon remembers "I could see him for the first time. I went into the intensive care unit and he looked at me and said, 'Why does God want me to die?' And I said, 'Oh, Mark, he doesn't want you to die.' I never asked him why he thought that way. I realized later after it was explained to me, that when he was on a heart lung machine there might have been a fraction of a time that there was stoppage of the heart."

That "fraction of time" would come up again

when Mark was 13 years old. Sharon tells the story: "There was a Sunday paper that had an article that even babies have out-of-body experiences. So, I said, Mark, you should read this article. It's really interesting." Taking it to his room, Mark read it, then returned to his mother and said, "I had that happen to me. When I had my heart surgery."

Years later, Mark would have another death experience when Joseph Wills stepped-off a bus from Minnesota, pulled-out a hand gun, murdered Mark, and stole his car. It was an unbelievable random act of violence. Sentencing Joseph Wills to life in prison, Dane County Judge Gerald Nichol stated "It was deliberate. It was cold. It was calculated. It was senseless." But mom and dad, Sharon and Hank Starkey, did make sense of it. Visit Bethel TV at [youtube.com/watch?v=TseB4UgOr_Q](https://www.youtube.com/watch?v=TseB4UgOr_Q) and hear them describe in their own words how God brought them through the tragic killing of their beloved son. 🌈



XYZ

April 14 and 28

XYZ (extra years of zest) will be meeting on Fridays, April 14th and 28th. We will have chapel with Pastor Jeff Quinto, euchre, book club, and exercise time, and lunch. There will be sign ups for our bus trips. On June 29th To see remembering Red in Mount Morris, Ill. Cost is \$58.00 members, and \$65.00 for non-members includes Buffet lunch. Also, we have a boat cruise on the Wolf River with buffet. On July 28th. Cost is \$60. Member and \$67.00 for non Member. Contact is Sue Marking wmarking@msn.com. 🌈

APRIL FRIENDSHIP CLUB DINNER

April 14

Bethel's supported group, Friendship Club provides ANYONE with Christian Fellowship, growing in God's love and sharing this love with each other. The next Friendship Club dinner will be Friday, April 14th. Dinner is served at 6:30 in Borgwardt Hall. Jim Esmoil will be our spiritual leader. DeWayne Keyes on harmonica and Doug Barrette on guitar will present a Harmonica Hour program for our enjoyment. Dinner will be baked and deep-fried fish, baked potatoes, rolls, coleslaw, garden salad and dessert. The cost is \$12 for previous members, \$15 for visitors. Please remember to call Judi Griffin 608-222-9290 by noon the Tuesday prior to the Friday dinner if you need to cancel. Cancellations after the deadline will be charged. Carry outs are available. Looking forward to seeing you in April! 🌈



Hillary Schreiner

CALL COMMITTEE UPDATE

As Bethel's immediate attention is rightfully set on Jesus' resurrection and the coming season of Easter, new figures are emerging on the horizon for Bethel's staff. In an email to Pastor Mike, the South-Central Synod of the ELCA has shared the news that they are actively searching for a suitable candidate for Bethel's vacant associate pastor position. As a result, there is a strong possibility that interviews will begin in late Spring. All Bethel members are asked to pray for discernment and wisdom for the Call Committee and any candidates. Members of the Call Committee include Hillary Schreiner (chair), Ashley Becker, Euan Ford, Stacey Simatic, and Dan Stein. To offer encouragement, ask questions, or suggest potential candidates for the committee to pursue, please email Hillary at hillaryschreiner@gmail.com. 🌈



ON THE

KARIN BROWN TO BECOME BETHEL DIRECTOR OF VISITATION & PASTORAL CARE IN JUNE

On the road of ministry, Jesus often leads us along some wonderful bends on the way. That is true for Bethel this year as the staff takes a welcome turn. Current interim Pastor of Visitation, Ken Schaub, will end his time with Bethel at the end of June to take a new assignment within the synod. At that time, Karin Brown, who has served as Director of Kids & Family for the past year will move out of that position and into the position of Director of Visitation & Pastoral Care. This will be a fulltime position and will include visitation (hospitals, nursing homes, bereavement, etc.), pastoral care and counselling, Stephen's Ministries, chaplain care and spiritual support for XYZ, Friendship Club, Men's Christian Fellowship, and Women's Ministries (Advent by Candlelight, Women's circles, Women's retreat, Triennial, Lutheran World Relief, Blanket Ministry, and Prayer Shawl). The reasoning supporting this move rests on the awareness that Bethel's staff support for ministries that relate largely to retired people have lagged in the past three years.

In contrast, Bethel has fulltime staff for Kids & Families (birth – 6th grade) and for Youth and Young Adults (associate Pastor position). But there has been no dedicated staff person for people who are retired or in assisted living facilities. As a result, some of

Bethel's traditional, historic, and cherished

programs have suffered from a lack of adequate staff support. Moving Karin into

this role meets this need. She is imminently qualified. She graduated from St. Olaf with a degree in biology and chemistry, then from Wartburg Theological Seminary with a Master of Divinity. She also completed five units of Clinical

Pastoral Education, served as interim pastor for churches in Iowa, as

youth director and musician in Indiana for 20 years, and as hospice chaplain for six years. Karin is a gift who brings depth, grace, and direction. 🌈



Karin Brown

HORIZON

KEEPING AN EYE OUT:

Position Open for Director of Kids and Family

As a result of moving Karin Brown to serve as Director of Visitation and Pastoral Care in June, Bethel seeks qualified candidates to fill the position of Director for Kids & Family. Applications (resume with cover letter) will be accepted until April 30, with interviews taking place in May. A fulltime position, the primary purpose for the Bethel Director of Kids & Family is to help create an environment where Kids (birth-6 th grade) develop a personal and ongoing relationship with Jesus Christ and where families find support and resources for a faith-filled life shaped



by the Lutheran tradition. This is a full-time (40 hours minimum) exempt (salary) position. Salary is commensurate with qualifications and experience. Bethel offers a premium benefits package for eligible employees, including employer-paid health premiums, HSA or FSA plans, vision and dental coverage, life and disability insurance, and a substantial retirement contribution with no match required. The position comes with continuing education stipend, a generous paid time-off policy, and paid holidays. All benefits commence on the start date. Find the full job description on the Bethel website. 🌈

TRANSITIONS

by baptism

Siena Gleason 3/26

by affirmation of faith

none

by marriage

none

by death

Michele Brand 2/25





BETHEL COMMUNITY SERVICES CORPORATION

Bethel Community Services Corporation is the community social service arm of Bethel Lutheran Church. The mission of the BCSC is to assist and/or develop services for vulnerable and at-risk populations. In February of 2023 the BCSC awarded the Salvation Army, Madison Campaign, a grant for \$10,000. This money will be used to furnish a lounge area in one of the two-buildings being built behind the present Salvation Army. The buildings will deliver emergency shelter, affordable permanent homes, dedicated support services, and a Community Center.

In 2022, BCSC honored more Grants to the following organizations in the Dane County Community: Madison Jail Ministry = \$8800, Nehemiah Community Development Corporation = 7500, Dayton House = \$10,000, Nehemiah Allied Drive Center/Food Pantry = \$5000; grant total given out was \$31,300. Donations are welcome to this corporation. 🌈



VERONA STRING QUARTET

April 23, at 4pm

“..cohesive yet full of temperament...vibrant, intelligent...” — THE NEW YORK TIMES

Bethel Concert Series funded by a generous grant from the Bethel Endowment Foundation is pleased to present the Verona String Quartet. Acclaimed for its “bold interpretive strength, robust characterization and commanding resonance” (Calgary Herald), the Verona Quartet has firmly established itself amongst the most distinguished ensembles on the chamber music scene today. The group’s singular sense of purpose most recently earned them Chamber Music America’s coveted 2020 Cleveland Quartet Award, and a reputation as an “outstanding ensemble... cohesive yet full of temperament” (The New York Times). The Quartet serves on the faculty of the Oberlin College and Conservatory as the Quartet-in-Residence, in addition to holding residences at the Lunenburg Academy of Music Performance, Indiana University Summer String Academy and North Carolina’s Chamber Orchestra of the Triangle.



The Verona Quartet has appeared across four continents, enchanting audiences at venues such as Carnegie Hall, Lincoln Center (New York City), Kennedy Center, Library of Congress (Washington, D.C.), Jordan Hall (Boston), Wigmore Hall (U.K.) and Melbourne Recital Hall (Australia), and has performed at festivals including La Jolla Summerfest, Chamber Music Northwest, Caramoor, Alpenglöw, and Bravo! Vail, and with the Chamber Music Society of Lincoln Center. The quartet curates the UpClose Chamber Music Series under the auspices of the Chamber Orchestra of the Triangle, bringing the visceral energy of classical music to diverse audiences in venues ranging from concert halls to craft breweries, and unlocking the secrets of the music through the “intimate way they communicate with each other and the audience” (The Arts Fuse, Boston). 🌈



CONFIRMATION CELEBRATION WEEKEND

May 6 - 7

As the winter weather breaks and gives us hope that spring and summer are coming soon, Bethel's confirmation program will very soon culminate with a weekend full of celebration and promise for 11 of our young believers. Mark your calendars for the first weekend in May and please pray earnestly for Zoe Engelke, Mercy Knoflicek, Maddie Kublank, Hannah Lenz, Kent Mullen, Lauren Scheib, Nolan Trine, Ella Turcott, Brady Zoellick, Riley Zoellick, and Mia Mistele as they prepare their personal faith statements and final confirmation projects.

The celebration weekend begins with our "Faith Statement Banquet" in Borgwardt Hall on Saturday, May 6, 10AM-12PM. Families and friends are invited to join us for a Brunch Banquet where confirmands will be invited to share their faith statements, be prayed over, and awarded their red sashes

and Mission Patches. Please email Karin@bethel-madison.org with the number of people in your party so that we can plan for food!

The celebration weekend continues on Sunday morning, May 7, 2023 at 8:30AM when the confirmands will assemble, robe, and be instructed on the final details of their participation in our Affirmation of Baptism ceremony which will be an important element in the 9AM traditional worship service that day. They will process down the aisle to be recognized and prayed for by the whole assembled congregation including their family and closest friends. After the service, the congregation is invited to warmly congratulate them and acknowledge this memorable event with hugs, cards of encouragement and support, words of faith and wisdom, Godly love, and delicious cake! 🍷



EYEGLOSS AND HEARING AID COLLECTION

The Lion's Eye Bank of Wisconsin is collecting eyeglasses and hearing aids. They are working with Anderson Shapiro Eye Care Clinic in Madison to host an eyeglass fitting health fair from 9 a.m. to 3p.m. on Saturday, April 15. As part of the event, Anderson Shapiro's optometrists will provide a free vision screening and then fit attendees with used eyeglasses courtesy of the Wisconsin Lions Foundation. They will have a variety of prescription strengths on hand to accommodate all attendees. In addition to vision, they are also able to provide a free hearing screening at this event courtesy of Elite Hearing Centers. There is a collection bucket near the reception desk. More information about this event can be found on the bulletin board by the Food Pantry. 🍷

BETHEL ADULT KICKBALL TEAM

Do you miss the elementary school days of an action-packed kickball game? Or maybe you want a reason to get outside on a beautiful summer night and hang out with some of your Bethel friends at Olbrich park? If you answered yes and are able to kick a ball, then you are encouraged to sign up for the Bethel kickball team! Games are Wednesday evenings May 29- mid-August. Leagues are all gender and 18+, although 16 and 17 year-olds can play with a participating adult. Interested or have questions: email Katie Ward at katiekabe@yahoo.com by April 2nd. 🍷



VACATION BIBLE CAMP 2023

July 31 - August 3

Join your friends from Bethel for faith, fun and friendship at Bethel Horizons in Dodgeville.

Overnight camp is available for ages 8-18. Children younger than 8 are welcome to attend with a adult.

Day-camp is available for ages 5 and up, and day-campers are responsible for their own transportation.

DAY-CAMP

Cost \$105/person

Transportation available to and from Grace Lutheran Church, Dodgeville.

Depart from Grace at 8am.

Pick-up at Grace at 5:00pm.

OVERNIGHT CAMP

Cost \$130/person

Arrive by 9am on Monday.

Depart by 4:30pm on Thursday.

Transportation available by bus, departing from and arriving to Bethel.

For more information or to register follow the link to the Bethel Horizons Website.

QUESTIONS?

Contact: Heather Moen

heather.rainwater@yahoo.com 



FAMILY CAMP

July 4 - 7

IF REGISTERING AS A FAMILY: When starting the registration, please only enter your name. You will have an opportunity later to add names and ages for remainder of your family. This ensures you are only charged the family rate once instead of per person. Thanks!

Join us for the 3rd year of this fabulous event!

WHAT CAN YOU EXPECT? A fun-filled week of Horizons activities including all your old favorites plus a bunch of new traditions. Throughout the week, some options we're exploring include hiking, swimming, biking, service projects, ropes/cliff adventures, art activities, campfires, group activities/games, kid-friendly entertainment, adult nights out, and of course, campfires!

WHO WOULD ATTEND?

Our goal for this program is a group of people comprised of any combination of solo adults, couples of any age, and families of all shapes and sizes.

LODGING AND FOOD? We have plenty of room to space out; you'll be able to reserve your own space in the Prairie Center, Barn Retreat Center, or Tent & Trailer campground. Leave the cooking to us - all meals will be provided. We can accommodate dietary restrictions, the registration will ask if there are any

dietary restrictions. *If you would like to stay through Saturday (no programming or food provided beyond Friday 4:00pm), please contact bethelhorizons@bethelhorizons.org to arrange an additional nights stay.

WHEN IS IT? Family Camp @ Horizons will begin on Tuesday, July 4th, and go through Friday, July 7th. We hope to see you for all 5 days of fun, but do come/go as your schedule requires.

WHAT ABOUT COVID? CDC approved policies for camps and retreat centers


will be followed. Full description of policies is at this website: <http://www.bethelhorizons.org/coronavirus-covid-19-update/>

QUESTIONS: please contact Heather at heather.rainwater@yahoo.com. We hope

you're as excited as we are and will join us for Family @

Horizons!

REGISTER HERE

or on the Realm website for Bethel under Events! 





SPRING AT HORIZONS

April 14 - 16

Please join us for Spring@Horizons, taking place this year Friday-Sunday, April 14-16, 2023. Come for the whole time or just for a portion. A variety of activities will be available including ropes course adventures, hiking, art and nature activities, campfire, and service projects. We can't wait to spend some quality time together enjoying all that Horizons has to offer. All are welcome!

WHO: Anyone who enjoys spending time at Bethel Horizons with friends both old and new.

WHAT: A spring weekend full of fun, relaxation, and connections with God, Self, Others, and Nature.

WHERE: Bethel Horizons, 4651 County Road ZZ, Dodgeville, WI 53533.

WHEN: April 14 at 6pm through April 16 at 11am (arrive/depart as needed).

OTHER DETAILS: For those spending the night, accommodations are available at the Prairie Center (1 household to a room) Meals will be provided Saturday and Sunday morn-

ing; we can accommodate dietary restrictions.

COST: Overnight visitors (2 nights): \$100/person or \$300/family, (1 night): \$65/person or \$200/family; Day visitors: \$35/day/person or \$100/day/family. Scholarships are available. Please prayerfully consider what you can contribute. Registration costs cover accommodations if applicable, activities, and meals.



QUESTIONS: please contact Kelly Knueve at kellyknueve@gmail.com or Heather Moen at heather.rainwater@yahoo.com or Jennifer LaMontagne at terioj@hotmail.com.

REGISTER HERE

or on the Realm website for Bethel under Events! 🌈



BIKE-A-THON

June 3

This year marks the 38th Annual Bike-A-Thon for Bethel Horizons. What started as a fundraiser to build community and awareness of Horizons' budding Adventure programs has grown into an annual event that provides transformational experiences in nature through affordable field trips and programming at camp.

"In a world where people spend hours on screens and minutes outside, you can reverse that and help people spend hours outside and minutes on screens," says Phil Bramley, Horizons Adventure Director and Bike-A-Thon Committee Chair. The Adventure & Environmental Educations programs at Bethel Horizons provide hundreds of affordable field trips to thousands of students every year.

We all know that more time in nature is better for our overall mental and physical health and today's young people are in need of this connection and experience now more than ever. It's almost overwhelming to look back over the last 38 years to see how advances in technology have put the world at our fingertips, and yet students today are more isolated and disconnected than ever before.

Please join us on Saturday, June 3, 2023 to make the 38th annual Bike A Thon the most successful ride yet.

When you participate in the Bethel Horizons Bike-A-Thon you are a part of a community that directly impacts students by providing the funds needed to allow Horizons to keep the cost of these field trips affordable for schools. It's no secret that school funding and support are limited for these types of experiences, but you can ensure transformational experiences in nature continue to benefit the next generation to help them R.I.S.E. above any challenge. 🌈



ADDRESS SERVICE REQUESTED

NONPROFIT ORG
U.S. POSTAGE

PAID

MADISON, WI
PERMIT 602

BETHEL

LUTHERAN CHURCH

312 Wisconsin Avenue
Madison, WI 53703



FUND FACT\$

1 Expense to fund one day of the year for BLC \$5040 – based on 2023 operating budget.

2 If you are age 70 ½ or older, an IRA is an excellent vehicle for charitable gifting – even edging out appreciated stock – tax benefit wise. No tax on your money going in, and when given directly to your church QCD, non-taxable as a withdrawal too. Bonus – this gift can also count toward your required minimum distribution RMD. Experts say that an IRA is the least desirable asset to leave to your family because of the tax implications. 🌈

FEBRUARY 2023 YEAR-TO-DATE FINANCIAL SNAPSHOT

	YTD Actual	YTD Budget	Budget
REVENUES			
Offerings	315,700	267,783	47,917
Miscellaneous revenue	17,361	39,016	(21,655)
Non-operating revenue	202	(125)	327
Total Revenue	333,263	306,674	26,589
MINISTRY INVESTMENTS			
Staff	198,460	229,838	(31,378)
Ministry & Resource Teams	56,525	57,413	(888)
Benevolence	4,790	4,666	124
Administration	16,401	14,692	1,709
Other	-	-	-
Total Ministry Investments	276,176	306,609	(30,433)
Total Net Income (Loss)	57,087	65	57,022

A complete copy of the financial statements are posted to Realm; you can access these through your Bethel Realm profile.



[bethel_madison](#)



[Bethel.Lutheran.Madison.WI](#)



[bethelmadison](#)



[BethelLutheranTV](#)

Worship Times: Sunday at 7:30am & 9am - Traditional; 10:30am - Contemporary
Saturday at 5pm - Acoustic Casual

