

BETHEL ENDOWMENT FOUNDATION

F o u n d a t i o n L i f e n e w s l e t t e r

www.bethel-madison.org

Bethel Lutheran Church Endowment Foundation

Fall / Winter 2022

Homeless summit focuses on trauma-informed care

As you put another log on the fire this winter or prepare a warm meal for your family, think about those who live and sleep outside – every day and every night. This is a reality for the growing homeless population in downtown Madison.

Bethel held its 2nd Annual Summit on Homelessness in September. Professionals from health, support and municipal fields gathered to create more effective responses to the homeless crisis by fostering strategic friendships and collaborative relationships.

Trauma-informed care (TIC) was the theme of this year's summit. TIC is a treatment model that emphasizes understanding, compassion and responding to the effects of all types of trauma. It



considers physical, psychological, and emotional safety.

TIC can be incorporated into a variety of practices, including housing, primary care, mental health and addiction services.

Becoming trauma informed means recognizing that people have different traumatic experiences which often intersect in their lives. This approach is relevant when addressing homeless people as many of them have faced traumatic events, such as being exposed to violence, experiencing losses and dealing with broken relationships.

Furthermore, the experience of homelessness itself is traumatic,

as it involves a lack of stability and a disconnection from the community at large.

Keynote speakers at the summit included:

- Dr. Algernon Felice, a distinguished master therapist.
- Dr. Cheryl Gagne, who directs a training program for addiction professionals in Massachusetts.

The summit also featured breakout sessions and panel discussions, as well as other speakers from: Dane County's Jail Ministry, Community Alternative Response Emergency Services and Journey Mental Health Center.

The Annual Summit on Homelessness allowed Bethel to take another step toward becoming a prevailing spiritual influence and community leader in Madison. It continues a 15-year tradition of Bethel's commitment to serving with and among downtown Madison's most vulnerable population—the homeless.

Funding from the Bethel Endowment Foundation helps cover the cost of outreach activities like the summit.



Transportation and more gets makeover at Horizons

Besides camping, a lot has been taking place at Bethel Horizons this year. Here's a snapshot of some recent happenings:

Minivan

A 2019 Dodge Caravan now makes its home at Horizons. It replaces a 2006 model with nearly 200,000 miles.

The new white van will be used to transport campers, staff and various supplies. It is a much more reliable vehicle for staff who are out recruiting and doing other camp-related errands.



Air conditioning

We replaced the outdoor compressor at the Camp House after the existing air conditioner failed in July.



Golf cart

We purchased an electric golf cart that will be safer than our camp utility vehicles. The quietly operating golf cart will be used to move people, food and supplies around camp.

The goal is to slowly shift away from John Deere Gators that are used for camp transportation.



Other

Additionally, we remodeled the Prairie Center bathroom after a pipe burst in spring. We also purchased a carpet cleaner to reduce the reliance on rental units.

We are considering:

- Purchasing a second golf cart with larger wheels and higher clearance so that it could get to the valley if needed.
- Making major bus repairs.

“The flexibility of the block grant this year was a wonderful tool,” explained Bethel Horizons Executive Director Eric Knueve. “As the year progressed, we were able to re-prioritize in real time and effectively meet the camp’s greatest needs without causing large unexpected costs to hit the operating budget. We are very grateful to the Foundation for their trust in allowing us this flexibility.”

Gifts and memorials make memories

Thank you for your generous gifts that enable the Bethel Endowment Foundation to contribute to many special programs. Bethel Lutheran Church has established memorials for each deceased member since 1964. You may add to one of these, start a special fund or offer general contributions.

Memorials were established for the following Bethel members between April 1 and September 30, 2022:

Muriel Anderson	Joan Borgwardt	Daniel Gerland	Marian Mylrea	Warren Stolper
Hope Bakken	Halverson	William Kube	Linda Pauls	Roger Tietz
Cheryl Beecher	Linda Clauder	John Luther	Eunice Peterson	Marion Urich
Elvera Berg	Jean Erickson	Renate Madsen	Lawrence Schantz	Eugene Woehler

(cont'd. on page 6)

The opportunity of adversity

I had the recent good fortune to hear Malcolm Gladwell as a keynote speaker at my husband Bill's education conference where there were 2,100 in-person attendees, 1,900 guests, exhibitors or office personnel, and 2,000 virtual attendees. Six thousand listeners heard him tell us that earning trust of those we serve is paramount to positive results for all concerned.

He has such an interesting life perspective and insights into human behaviors, plus is a compelling storyteller (evidenced too by his many popular bestselling books written).

In a recent book, *David and Goliath: Underdogs, Misfits and the Art of Battling Giants*, he highlights the advantage of disadvantages and poses that we generally underestimate the value of adversity and over estimate the value of privilege. Imagine too, a Bible story – being more deeply understood by the populace!

It seems for many decades, Bethel was seen to be a church of privilege and comfort. This reputation, true

or not, was embraced by some and mocked by others. If anything good came from several recent negative extraneous factors (crippling pandemic, organized religion stains, generational traditions/routine changeability), it's that Bethel now has more adversity to face than easy privilege.

But Gladwell says to embrace the creative challenge of such a turn of events! In the case of David and Goliath, was it simply that God was on the underdog's side? Or moreso, was it David's preparation met with opportunity? The right people at the right time and place - led by divine intervention.

The year 2023 will be a different time for Bethelites than was 1983, two generations ago. Let's face the challenge as workers together in the Kingdom, sharing intellect, resources and solutions – as well as solace for one another, hope and affection.

Your Endowment Foundation arguably touches all elements of Bethel – from immense capital needs at Bethel and Horizons



Alice Mowbray

trusted leadership support to the warm and fuzzy gift of handcrafted mugs celebrating the recent 85 years of Friendship Club fellowship, and many projects in between.

The coming months of economic uncertainty may infuse more adversity than desired into the corpus' growth - but the gift of long-term perspective and consistency of discipline will help and guide us. Much gratitude to all who make Bethel and its legacy ministry what it is and what it can be going forward.

Alice Mowbray
Director of Development

Farewell to trustee Sue Ullsvik

Thank you to Sue for her three plus years of service from spring of 2019 until summer of 2022. She is a leader and proven development professional from whom much has been learned and appreciated!

Within the coming months, a new trustee will be named in this place. We are so fortunate to have many leaders within our church who offer so much expertise - blessed we are.

Videos provide learning opportunities, inspirational stories

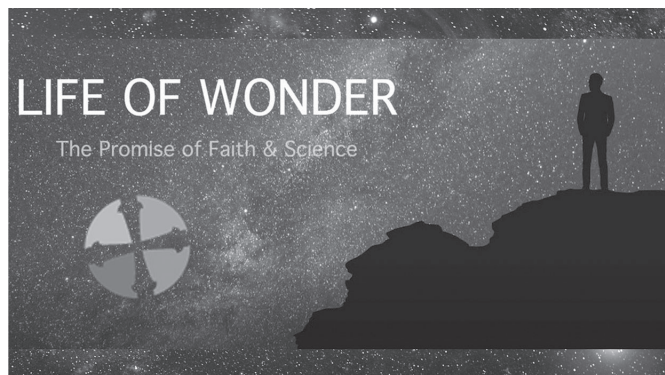
People are drawn to good stories, and videos are a great way to tell a story and engage. With funding from the Bethel Endowment Foundation, Bethel has developed several YouTube videos to help generate connections, cultivate new members and be the prevailing spiritual influence in Madison.



My Living Savior Story: Jim Messinger

My Living Savior Story is a series of video stories by and about Bethel members who have had a significant encounter with God.

In the first video, Jim Messinger tells how, at 21 years old, he lost his leg when a drunk driver crossed the center line on a country road near Barneveld, Wis., colliding with his 1967 Kawasaki 250. Hurlled into the air and somersaulting down the country blacktop, his body landed in the ditch, crushed and broken. Alone and bleeding out under the night sky, he accepted the certainty of his death and closed his eyes to die. A voice spoke to him, God's voice, and brought him back to life.



Life of Wonder - The Promise of Faith and Science

This video is a teaching-sermon introduction video that features Bethel scientists talking about the relationship between science and religion.



Fireside Chat - October

This third video is the series of Fireside Chats that Lead Pastor Mike Brown prepares each month. Here viewers get a glimpse of what is happening at Bethel or as a result of Bethel.

From Vacation Bible Camp to family retreats

Activities at Bethel Horizons this year offered opportunities for building faith, exploring the outdoors, making friends and having fun. This included:

- Vacation Bible Camp in July-August.



- Family retreats in April and July, with a third planned for December.

Grants from the Bethel Endowment Foundation help cover the cost of enriching events and make attendance possible for more people.

Can you hear me now?

Over the many months of the COVID-19 lock down and no in-person worship gathering permitted, Bethel continued to provide worship services by live stream and on WKOW.

On one fateful Sunday morning in November 2020, the sanctuary was silent as the sound mixing board expired. This loss would have been detrimental for in-person worship. Fortunately, Bethel's mixing console for the live-stream/broadcast was still functional.

After waiting several weeks for a new power supply, we discovered



that the previous failure appeared to take out two-thirds of the inputs on the console. Thanks to a mid-year 2021 grant from the Bethel Endowment Foundation, as well as funds from the Media Ministry and Church Council contingency, Bethel's sound system got an upgrade. It included:

- New mixing consoles in the sanctuary and the media ministry (and are now the same model console).
- Upgraded sanctuary amplifiers (several of which have had repairs or replacements over the years).
- Expanded wireless mic capability (doubled the number of channels).
- In-ear monitors for the contemporary service's worship team (gives the ability to provide custom mixes to help each performer do their best).

Columbarium planned at Bethel

The Bethel Columbarium Committee has been working for over a year on plans to create a space at Bethel for a columbarium – a vault with niches to hold urns containing cremated remains.

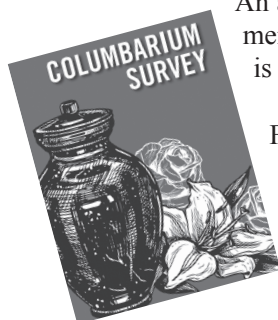
An accompanying memorial wall also is being planned.

Following a design setback due to the structure of the space, it has been

redesigned, and the new drawings recently were shared with the congregation on All Saints Sunday.

A survey was conducted gauging congregation interest in the project, before moving forward. Work will commence pending council approval in November. This will include construction plans and processes for securing niche spaces and memorial wall locations.

A grant from the Bethel Endowment Foundation provided seed money for this special project.



Sunday, Nov. 20
Bethel Sanctuary
4:00 pm



Inna Faliks,
Ukrainian born
American pianist

Polonaise Fantasie:
The Story of a Pianist

Inna Faliks recounts her life
adventures, influences and
evolution as an artist
through this special
piano performance.

Grants from the Bethel
Endowment Foundation make
magical musical performances
like this possible.

Listen to the music

What makes the music we hear at Bethel so special? It's the magical combination of our choir, professional musicians and instruments.

Choir section leaders

Bethel began staffing choir section leaders last year. They are paid singers who sing as a member of the Bethel Choir, provide guidance to their section and sing solos as needed.

Section leaders have consistently gone above and beyond, and our choir has been challenged in new ways.

Brass quartet

Bethel also brought on six professionals for worship. This included Bethel Brass and trumpet players.

"The project exceeded my expectations because of how well received the brass music was by the congregation," said Zach Busch, Bethel's Minister of Liturgical Worship "The powerfulness encourages people to sing with more gusto. The sound fills up our vast worship space and gives us a sense of dynamic."

Grants from the Bethel Endowment Foundation help cover the cost of enhanced musical experiences at Bethel.



Memorials

(cont'd. from page 2)

The following bequests were made to the Foundation between March 1, 2020, and December 31, 2021:

John Kutzbach (April 2021)

Sam Roth (March 2020)

Jim Underkofler
(December 2021)

The following individuals contributed general gifts to the Foundation between April 1 and September 30, 2022:

Brad & Barbara Armstrong
Lola Cator
Karol & Jim Dillie
Connie Scholz
Elizabeth Sugar

Gifts, honorary gifts and memorial contributions were made to the Foundation from April 1 to September 30, 2022:

In memory of Gary (Cork) Broge by Judith Broge

In memory of Harold Cushman by Joan Gilbertson

In memory of Barbara Espeseth by Bev Stephen

In memory of Dan Gerland by Joan Gilbertson

In memory of Joan Borgwardt Halverson, my loving wife by Ron Halverson

In memory of Joan Borgwardt Halverson by David & Candace Anderson, Mary Lou Bennett, Carrie Bernhardt, Bob

& Mary Brennan, Paul Aspinwall & Bonnie Bruce, Paul & Suzanne Buckner, Cathy Buege, James & Krisit Cuccia, Joy Dohr, Robert & Lela Feuerborn, Joan Gilbertson, Kevin Gould & Nancy Baillies, Paul & Kathleen Greisen, Kurtis & Margaret Helin, Faith & Mark Kelley, Gary & Amanda Kuter, Larry & Carol Larrabee, Regina Lee, Ann Leon, Jim & Kay Lindblade, Jeffrey & Jill Mack, Peder & Jeanne Moren, Bill & Alice Mowbray, Alinda & Robert Nelson, Olin & Marilyn Odland, James & Karen Rouse, Richard & Peggy Saeman, JoAnn Six, Kristi Sullivan, Merrillyn & Dave Tauscher, Joanne Taylor, Sue Ullsvik, Dorie Underkofler, Jean Unverzagt, Carolyn White, Kathleen Woit, Joan Zingale, family and friends

In memory of Karl Marquardt by Joan Gilbertson, Sarah Rose

In memory of Marian Mylrea by Joan Gilbertson

In memory of Ron Smith by Alice Heinrichs

In memory of Cheryl Tesnow by Donna Ulteig

In memory of Lu Westervelt by David & Kelly Bakke, Virginia Bonner, John & Annette Buggy, Arlen & Judy Christenson, Daniel & Catherine Furseth,

(cont'd. on page 7)

Memorials

(cont'd. from page 6)

James & Sonya Gindorff, Kevin Gould, Lucille Hall, Virginia Jefferds, William & Julie Johnson, Lois Krammer, Peder & Jeanne Moren, Bill & Alice Mowbray, Jason Mundstock, Nancy Nelson, Donna Olson, Patience Roggensack, Sarah Rose, Burton & Karen Scheele, JoAnn Six, Pete & Phyllis Sprecher, Denis & Laura Vogel, Carolyn White

Seminary scholarships

2022-23 recipients of the Cephas Johnson Memorial Scholarship include:

Heather Moen Bethel Lutheran Church
Elise Iverson Uphoff ... Midvale Community Lutheran Church
Vica Steel Midvale Community Lutheran Church
James Ranney Two Steeples Parish, Springdale Lutheran Church
Laura Jasiczek Lakeview Lutheran Church (on Intern year)

Uphoff attends Luther Seminary, while the other four recipients attend Wartburg Seminary. Funding from the Bethel Endowment Foundation helps support students studying at an ELCA seminary on ordination track.



ACTJAM opens eyes to racial injustice

ACTJAM provides programming throughout the year on how racial injustice continues to impact all facets of life for non-white people.

Earlier this year, Bethel was selected for a pilot program called, *Let's Talk*. Bethel is one of two congregations chosen to pilot the course this fall. *Let's Talk* is a follow-on to the Nehemiah Black History for a New Day course (see article at right).

The Nehemiah course allows us to support a local black organization and have the learning spread over multiple months.

Other ACTJAM programming this year has included:

- Held a forum and workshop on the Bethany Indian Mission and Norwegian settler relationships with Native Americans.
- Purchased a DVD of the Inhabitants documentary, a collaborative



effort between ACTJAM and C4C.

The ACTJAM team conducted interviews with Bethel members who participated in ACTJAM activities. "Keep doing what you're doing," was a consistent theme.

One of the most important outcomes of ACTJAM is that we have normalized the discussion of racism in a church setting.

Funding from the Bethel Endowment Foundation supports critical educational efforts like this.

Learning Black history

Nearly 50 people have taken part in Bethel's Nehemiah Black History course over the past two years. The most recent course began on Zoom in September. Bethel holds its own discussion group.

The nine-week class guides participants in activities to pursue and neighborhood partnerships to establish. It is followed by a three-week series of free classes aimed at helping participants find ways to apply what they have learned.

Funding from the Bethel Endowment Foundation helps cover costs so more people can participate in activities that allow us to follow our Lord in serving the community.



BETHEL
LUTHERAN CHURCH

312 Wisconsin Avenue | Madison, WI 53703

ADDRESS SERVICE REQUESTED

NONPROFIT ORGANIZATION

U.S. POSTAGE

PAID

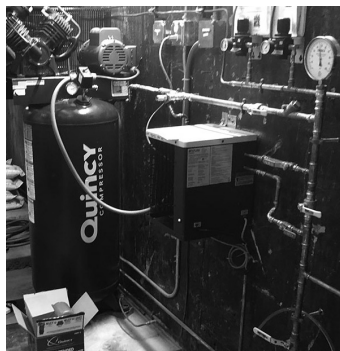
MADISON, WISCONSIN
PERMIT NO. 602

Important building updates

Bethel regularly makes building improvements to ensure efficiency, safety and aesthetic appeal.

Air compressor

A new air compressor system (see image at right) as been installed. It controls the HVAC controls, thermostats, control valves and actuators. The tank, compressor, air dryer, filters, header and blow down device have been replaced.



Terrazzo stairwell

The terrazzo (a com-posite material used for stairs) in the stairwell from the west side of the sanctuary down to the parking lot entry and then down to the lower level by the kitchen has been ground and refinished. This includes replacing missing Terrazzo base and VCT at the landings.

Grants from the Bethel Endowment Foundation, along with private gifts, helped cover the cost of these projects.

Bethel Endowment Foundation Trustees

President
Walter Dewey*

Registered Agent
Laura Vogel*

Vice President
Barbara Armstrong*
New Projects Co-Chair

Members
Jill Derr*
New Projects Co-Chair

Secretary

Tony Arneson*
Joseph Murphy
Kathy Pielage*
Al Schultz*

Treasurer
Abbie Wallhaus

Assistant Treasurer
John Stoneman

Council President
Soren Schoff*

Ex Officio Members

Mike Brown
Lead Pastor
Alice Mowbray
Director of Development

* Denotes member of the New Projects Committee

George Austin Honorary Investment Committee

Walter Dewey, Chair

Justin Fletchall	Joseph Murphy
Bruce Fox	John Stoneman
Walter Meanwell	Bruce Westervelt

Editor: Alice Mowbray, Bethel Lutheran Church, 257-3577, ext. 222
Writing and design: Effective Communications