



BETHEL LUTHERAN CHURCH

Evangelical Lutheran Church in America



WELCOME

Whether you are a life-time member, or new to our faith community, *Welcome!*

Welcome to the excitement of new learning opportunities with Children's Sunday School, Adult classes and Bible studies, book clubs, art exhibits and sermon series.

Welcome to the many areas of service to our community and the world available through the ministries of Bethel.

Welcome to a new season of worship, music, youth ministry, fellowship, classes and caring for our community.



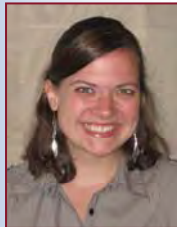
Bill White
Senior Pastor



John Swanson
Confirmation
and Visitation

Pastoral Staff

Sarah Harrold
Evangelism and
Mission



Duane Hanson
Bethel Horizons

Laura Sutherland
Care Ministries



Curt Everson
Visitation and
Worship



Pedro Suárez
Latino
Ministries



Bethel Pastors and Ministries

Bill White Senior Pastor

A graduate of Luther Seminary, Pastor White is in his twentieth year as Senior Pastor. His leadership has seen development of the Latino Ministries, Homeless Ministry, numerous adult education opportunities, global mission programs, including the Circle of Love program and the Puerto Rico Mission Church partnership. Bill has published six books. 608-257-3577, ext 326 bwhite@bethel-madison.org

John Swanson Confirmation and Visitation

On staff for sixteen years, John's main areas are Bethel's Confirmation program for youth, grades 7-9, visitation to homebound, hospitals and care centers, and Women's Ministry, including circles and retreats. 608-257-3577, ext 330 jswanson@bethel-madison.org

Sarah Harrold Evangelism and Mission

Bethel's most recent Pastor was called to develop a Young Adult Ministry, create new worship services and extend Bethel's presence in the downtown area. Additionally, Sarah is part of pastoral care and teaching. 608-257-3577, ext 332 sarah@bethel-madison.org

Duane Hanson Bethel Horizons

In his fortieth year as Camp Director, Duane leads the 548 acre Bethel camp which features summer camp weeks, retreats for adults and youth, a year-round Adventure and Wilderness Center, Naturalist program, Clay Studio and tent/trailer camping. 608-257-3577, ext 329 bhorizons@bethel-madison.org

Laura Sutherland Care Ministries

At Bethel for four years, Laura's focus is Stephen Ministry, Grief Ministry, Separated and Divorced Group, Homeless Ministry, and hospital and home visits. 608-257-3577, ext 331 laura@bethel-madison.org

Curt Everson Visitation and Worship

Since his retirement in 1997, Curt has been serving part-time in the areas of Worship, Bible studies and Visitation to hospitals, hospice care and homebound. 608-257-3577, ext 238

Pedro Suárez Latino Ministries

Since 2002, Pedro, along with his wife, Aura, have led and developed the Latino Ministry at Bethel, including Youth Group, Confirmation classes, First Communion, Sunday School, after school programs, small group study and prayer meetings. 608-257-3577, ext 337 (Aura) 338 (Pedro) padrepedro@bethel-madison.org



Pr. White & Pr. Swanson



Pr. Harrold & Pr. Suárez with Puerto Rico Bethel Youth Missioner Commissioning



Puerto Rico visitors and Bethel members worship at 9:15 am service

Staff Contacts

2 0 1 0



Mary Conlin

Director XYZ and Volunteers

XYZ group, Prime Timers, scheduling volunteers for ministries, care visit scheduling, Greeters, Ask Me Desk.

608-257-3577, ext 334

blcxyz@bethel-madison.org



Annette Durkin

Director of Communications

Weekly *Bethelite* newsletter for print and web site, worship bulletins, covers, design projects, media.

608-257-3577, ext 327

bethelite@bethel-madison.org

Stacy Gahlman-Schroeder

Assistant to the Senior Pastor

Senior Pastor's schedule, Usher and Altar Guilds, Lay Readers, Hospitality Ministry.

608-257-3577, ext 325

stacyg@bethel-madison.org



Anita Grue, AIM

Coordinator of Youth Ministries

Grades 6-12, Ministry and Mission work for youth.

608-257-3577, ext 344

agrue@bethel-madison.org



Alice Mowbray

**Business Administrator-
Director of Development**

Bethel Foundation grants and gifts, Stewardship, planned giving, administration.

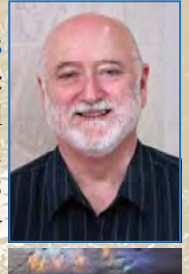
608-257-3577, ext 222

alicem@bethel-madison.org

Adult, youth and children's choirs. Instrumental groups and performing arts special events.

608-257-3577, ext 423

blcmusic@bethel-madison.org



Gary Lewis

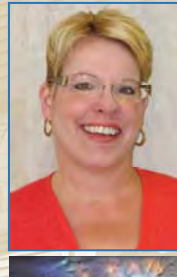
Director of Music-Organist

**Sandy Ripp
New Members Coordinator-
Data Administrator-Wedding Secretary**

Classes for new members, database management, wedding reservations.

608-257-3577, ext 231

sandy@bethel-madison.org



Jacqui Shanda

Director of Parish Education

Sunday School, Vacation Bible Camp, Bible studies, book clubs, Circle of Love, Library, Adult Education.

608-257-3577, ext 333

blceducation@bethel-madison.org



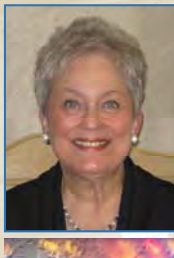
Dona Meyer

Assistant to the Business Administrator

Christmas-Easter Flower donations, Media Ministry donations, Grant request forms, Memorials, scholarships.

608-257-3577, ext 225

donameyer@bethel-madison.org



Lori Poulson

**Secretary to Director of Parish Education-
Confirmation**

Confirmation and acolytes, Sunday School and Vacation Bible Camp, Adult Education.

608-257-3577, ext 335

lori@bethel-madison.org

**Susan Straus
Secretary to Evangelism, Mission
and Care Ministries-
Family Life Coordinator**

Genesis Café, Usher & Altar Guilds, family events, Hospitality, Nursery

608-257-3577, ext 336

susans@bethel-madison.org



Linda Kubly

Receptionist

Phone calls, Food Pantry, room reservations, Altar flower donations.

608-257-3577, ext 221

recep@bethel-madison.org

Staff Contacts

2 0 1 0



Penny Duane
Bookkeeper
 Stewardship and statements
 608-257-3577, ext 229
 penny@bethel-madison.org



Angie Burnett
Secretary to Bethel Horizons
 Bethel Horizons
 Registrations, Information
 608-257-3577, ext 228
 bhorizons@bethel-madison.org



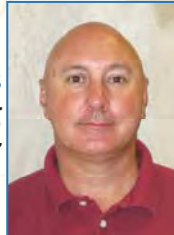
Lois Landsee
Parking Lot Attendant

Cory Hamilton



Assistant to the Youth Ministries Coordinator
 Youth, grades 6 - 12
 608-257-3577, ext 226

Darren Chicks
Building Manager



Aura Suarez
Assistant to Latino Ministry
 608-257-3577, ext 337
 aura@bethel-madison.org



Bill Webb
In-house Security, Saturday Receptionist



Steve Nelson
Food Service

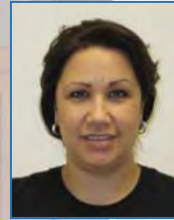


Yolibeth Rangel-Fitzgibbon
Southdale After School Program Director

yolibethr@gmail.com

Mayra DeGraff
Latino Youth Director

608-257-3577, ext 430
 latino youth@bethel-madison.org



Griselda Ortiz
Latino Youth Assistant
 608-257-3577, ext 430
 latinoyouth@bethel-madison.org

Volunteer Ministries and Committees

Altar Care & Communion Wayne Raether.....274-9661	Current Christian Concerns Larry Larrabee.....249-9982
Audio Techs-Sanctuary Jim Drews.....332-1936	Friends of Horizons Wayne Raether.....274-9661
Bethel Book Women Beth Olson.....338-8148	Habitat for Humanity Paul Moen.....233-9734
Bethel Food Pantry Bob & Peg Hoekenga838-8758	Hope House Burt Olson.....238-6594
Bethel Friends Stan Bang.....445-9226	Household-Estate Sales Pat Bruden.....246-1813
Bethel Ringers-Handbells Melodie Stranberg-Aas.....848-5615	Junior Youth Choir Myrna Kay Young.....241-0026
Blanket Workshop Jeanette Pochebut.....244-8067	Lutheran World Relief Bev Hanson.....274-6122
Cherub Choir Jamie Henke.....831-5749	Lydia's House Nancy Wanless.....246-8219
Children's Choir Chelsea Lauing.....698-0401	Meals on Wheels Meg Weaver.....243-7774
Christian Men's Fellowship David Lewke.....245-0287	Men's Book Study Roland Paul.....222-2421
Church Ladies Ministry Alice Hansen.....271-3388	Mission Wheels Hosts Frank Rudrud.....251-2223
Circles Nancy Wanless.....246-8219	Outreach Homes Roland Paul.....222-2421
Community Meal Program Janet Johnson.....274-6745	Read and Feed Kathy Pielage.....845-3396
Couples Club Judi Griffin.....222-9290	Red Cross-Blood Donors Alinda Nelson.....850-9476
Creative Worship Team Katie Czechowicz.....244-5452	Sunday Greeters Jack & Sue Marking.....849-5057
Cup Washers-Sunday Greta Hammonds.....204-9205	Women's Coordinating Council Nancy Wanless.....246-8219